

The background features a stylized American flag with red and white stripes and a blue field with white stars. A brown and white Ayrshire cow is positioned in the center, facing right. The text 'U S AYRSHIRE' is overlaid on the image. 'U' and 'S' are large, red, outlined letters. 'AYRSHIRE' is in a blue, outlined, serif font. Several blue stars are scattered around the cow and the text.

**U
S
AYRSHIRE**

**2016-2017
YEARBOOK**

SUNNY-ACRES HARMONY'S KENNEDY

EXCELLENT-94 4E



SUNNY-ACRES HARMONY'S KENNEDY

PUREBRED AYRSHIRE 03/29/07 FEMALE
 100492594 9-05 94 4E P- +387
 NM\$ -20
 PTA +2.86SCC +2.6PL +3.1DPR
 PTA -645M -27F -22P 55R
 PTA\$ -20CY 8/16
 PTA%
 PTAT +1.30T 63R 8/16
 PPA +192M +10F -3P
 CLASS ST8 SR7 BD7 DF8 RA5 RW8 LS6 FA7
 FU9 UH8 UW9 UC8 UD6 TP8 TL2 LR8
 GOLD % FAT % PRT
 2-03 2 294 17920 3.6 654 3.0 539
 3-02 2 287 17400 3.8 668 3.3 582
 4-02 2 309 24250 3.9 941 3.3 796
 5-02 2 315 26980 3.7 1003 3.0 798
 6-02 2 330 27630 4.0 1092 3.0 824
 7-03 2 365 32310 3.9 1272 2.9 943
 9-00 PROJ 23435 3.8 892 2.8 644
 LIFE 1998 150460 3.9 5824 3.1 4627

RES SR CHAMPION-2012 MID-ATLANTIC NATIONAL
 RES GRAND CHAMPION - 2012 MID-ATLANTIC NAT'L
 NOM ALL-AMERICAN 5-YEAR-OLD - 2012
 1ST AGED COW - 2013 MID-ATLANTIC NATIONAL
 RES SR CHAMP - 2013 MID-ATLANTIC NATIONAL
 1ST 100,000 LB COW - 2014 MID-ATLANTIC NAT'L
 HM ALL-AMERICAN 100,000 LB COW - 2014

KELLCREST HARMONY-ET

10029042C
 PTA +2.77SCC +1.5PL +3.0DPR
 PTA -1233M -42F -38P 95R
 PTA% +.04 +.01
 PTAT +.50T 90R 8/16
 D/AV 18078M 3.8 696F 3.1 562P 8.4T

SUNNY-ACRES BRENDAN'S KINETA

GOLD % FAT % PRT
 2-02 2 365 22380 3.5 773 3.0 668
 3-08 2 334 24180 3.7 893 3.3 808
 4-09 2 296 19360 3.0 573 3.3 641
 5-08 2 209 14770 3.6 535 3.2 471

GRANDDAM: SUNNY-ACRES JJ KINETA 2-ET

100057700 6-05 91
 GOLD % FAT % PRT
 2-00 2 279 14910 4.1 615 3.1 465
 2-11 2 308 20770 4.5 939 3.4 701
 3-10 2 365 24390 4.0 986 3.3 793
 5-09 2 313 24220 3.7 895 3.1 756
 6-10 2 314 18510 3.7 693 3.3 606
 7-10 2 239 12570 3.9 487 3.1 392
 LIFE 1888 117640 4.0 4758 3.2 3801

Sunny-Acres

DOUG & KATHE EVANS & FAMILY

4106 Davenport Rd., Georgetown, NY 13072

315.837.4777 • Andrew Cell 315.750.0719 • Gregory Cell 315.456.8283

sunnyacresayrshires@gmail.com

SUNNY-ACRES CA GINGER

EXCELLENT-92



SUNNY-ACRES CA GINGER

PUREBRED AYRSHIRE 6/4/12 FEMALE
 100645545 4-03 92 P7 +438
 NM\$ +36
 PTA +3.10SCC +0.7PL +0.4DPR
 PTA -262M -8F +5P 42R
 PTA\$ +36CY 8/16
 PTA%
 PTAT +1.30T 50R 8/16
 PPA -1293M -40F +12P
 CLASS ST6 SR5 BD6 DF7 RA3 RW7 LS5 FA4
 FU7 UH7 UW8 UC7 UD6 TP6 TL3 LR7
 GOLD % FAT % PRT
 2-00 2 305 16740 4.2 696 3.4 566
 323 17320 4.2 722 3.4 588
 3-00 2 305 20910 3.9 820 3.4 719
 329 21770 4.0 865 3.5 752

 1ST JR 2-YEAR-OLD-2014 MID-ATLANTIC NATIONAL
 RES INTERMEDIATE CHAMP-2014 MID-ATLANTIC
 NATIONAL
 NOM ALL-AMERICAN JR 2-YEAR-OLD - 2014
 1ST JR 3-YEAR-OLD - 2015 MID-ATLANTIC NA-
 TIONAL
 RES INTERMEDIATE CHAMP-2015 MID-ATLANTIC
 NATIONAL
 1ST JR 3-YEAR-OLD - 2015 INTERNATIONAL
 ALL-AMERICAN JR 3-YEAR-OLD - 2015

SUNNY-ACRES CLASS ACT

100579550 95.37%

PALMYRA RAMIUS S. GINGER

65002982 6-10 90
 GOLD % FAT % PRT
 1-10 2 308 20020 4.0 792 3.2 641
 2-10 2 365 23311 4.1 951 3.3 779
 4-02 2 365 27263 4.0 1080 3.2 867
 LIFE 1742 108200 4.1 4395 3.2 3418

 1ST FALL YRLG IN MILK - 2007 CENTRAL NATIONAL
 ALL-AMERICAN FALL YEARLING IN MILK - 2007

GRANDDAM: PALMYRA SATELLITE I GINGER

100164712 4-10 86
 GOLD % FAT % PRT
 2-00 2 303 20350 3.8 771 3.1 636
 2-11 2 303 15310 3.5 543 3.0 464
 3-11 2 365 20860 3.9 804 3.1 648
 5-01 2 299 23620 3.6 844 3.0 715
 6-00 2 298 25100 3.1 789 2.9 731
 LIFE 1569 105260 3.6 3752 3.0 3195

 NOM JR ALL-AMERICAN SR HEIFER CALF - 2001
 2ND MILKING SR YRLG-2002 MID-ATLANTIC NAT'L
 2ND MILKING SR YRLG-2002 MID-ATLANTIC NAT'L
 JR
 1ST MILKING SR YRLG-2002 SOUTHERN NAT'L
 1ST MILKING SR YRLG-2002 SOUTHERN NAT'L JR
 RES ALL-AMERICAN MILKING SENIOR YRLG - 2002
 JR ALL-AMERICAN MILKING SR YEARLING - 2002

Sunny Acres

DOUG & KATHE EVANS & FAMILY

4106 Davenport Rd., Georgetown, NY 13072

315.837.4777 • Andrew Cell 315.750.0719 • Gregory Cell 315.456.8283

sunnyacresayrshires@gmail.com

SUNNY-ACRES TBS SILK EXCELLENT-94



SUNNY-ACRES TSB SILK

PUREBRED AYRSHIRE 08/20/09 FEMALE
100579596 6-00 94 P9 +434

NM\$	+35								
PTA	+2.94SCC	-0.1PL	-0.4DPR						
PTA	-157M	-2F	+2P	50R					
PTA\$	+35CY			8/16					
PTA%		+0.2	+0.4						
PTAT	+1.30T		60R	8/16					
PPA	+923M	+81F	+39P						

CLASS	ST6	SR6	BD7	DF6	RA3	RW8	LS5	FA5	
	FU7	UH8	UW8	UC5	UD5	TP5	TL4	LR8	
GOLD				%		FAT	%	PRT	
2-03	2	305	21390	4.6		988	3.3	708	
		308	21630	4.6		1002	3.3	716	
3-04	2	305	28370	3.9		1100	3.1	877	
		343	30570	3.9		1185	3.1	958	
4-06	2	305	29950	4.0		1195	3.0	896	
		365	32710	4.0		1309	3.0	995	
5-11	2	305	26420	4.3		1145	3.1	816	
		308	26530	4.3		1150	3.1	821	
LIFE		1338	111730	4.2		4659	3.1	3503	

2ND 4-YEAR-OLD - 2013 MID-ATLANTIC NATIONAL
1ST 4-YEAR-OLD - 2013 INTERNATIONAL
SENIOR CHAMPION - 2013 INTERNATIONAL
GRAND CHAMPION - 2013 INTERNATIONAL
ALL-AMERICAN 4-YEAR-OLD - 2013
2ND 5-YEAR-OLD - 2014 MID-ATLANTIC NATIONAL
NOM ALL-AMERICAN 5-YEAR-OLD - 2014
3RD AGED COW, 2015 MID-ATLANTIC NATIONAL

PALMYRA TRI-STAR BURDETTE-ET

100419568
PTA +2.88SCC +1.2PL +0.2DPR
PTA +261M +6F +14P 99R
PTA% -0.2 +0.3
PTAT +1.80T 98R 8/16
D/AV 19864M 3.9 778F 3.2 630P 8.5T

SUNNY-ACRES WILTON'S SATIRE

100470020 2-04 82
DHI % FAT % PRT
2-02 2 300 13880 3.9 547 3.4 465

GRANDDAM: SUNNY-ACRES NOLAN'S SATIN

100390623 5-00 90
GOLD % FAT % PRT
1-11 2 305 18480 4.0 741 3.5 644
348 20640 4.1 848 3.5 728
3-00 2 272 15000 3.9 583 3.7 556
4-05 2 336 23390 4.2 980 3.3 779
5-06 2 305 30020 4.5 1348 3.3 989
365 32790 4.5 1491 3.4 1102
7-03 2 305 26180 3.6 936 3.3 872
349 28970 3.6 1045 3.4 974
LIFE 1683 121110 4.1 4958 3.4 4152

Sunny Acres

DOUG & KATHE EVANS & FAMILY

4106 Davenport Rd., Georgetown, NY 13072

315.837.4777 • Andrew Cell 315.750.0719 • Gregory Cell 315.456.8283

sunnyacresayrshires@gmail.com

SUNNY-ACRES RIGGINS RAMONA

EXCELLENT-93



SUNNY-ACRES RIGGINS RAMONA

92.59% AYRSHIRE 08/12/11 FEMALE
100628085

	4-00	93		P-	+396			
NM\$	-47							
PTA	+3.16SCC	+0.1PL	+0.8DPR					
PTA	-52M	-4F	-8P	50R				
PTA\$	-47CY			8/16				
PTA%	-.01 -.03							
PTAT	+.50T		57R	8/16				
PPA	-739M		-22F	-39P				
CLASS	ST6	SR5	BD7	DF6	RA4	RW8	LS5	FA5
	FU6	UH7	UW6	UC9	UD5	TP7	TL2	LR8
GOLD			%	FAT	%	PRT		
2-01	2	305	17170	4.2	720	3.1	537	
		314	17560	4.2	740	3.1	549	
3-01	2	303	19560	4.0	783	3.2	617	
4-00	2	305	24750	3.9	976	2.9	715	

2ND 4-YEAR-OLD, 2015 MID-ATLANTIC NATIONAL
2ND 4-YEAR-OLD, 2015 INTERNATIONAL
RESERVE ALL-AMERICAN 4-YEAR-OLD, 2015

VICKING & GENTLEMAN EMBRYOS AVAILABLE

PALMYRA POKER RIGGINS-ET

65459499

PTA	+3.37SCC	+1.8PL	+1.3DPR	
PTA	+224M	+23F	+8P	94R
PTA%	+.08			
PTAT	+.30T		89R	8/16
D/AV	18993M	4.0	755F	3.1 593P 8.4T

SUNNY-ACRES JACKSON'S RUDEAN

100579541 85.19%

	2-08	85		
GOLD			%	FAT % PRT
2-03	2	305	17750	3.5 628 3.0 535
		337	18690	3.5 657 3.0 568

GRANDDAM: SUNNY-ACRES CC RENEE

100390593 9-05 93 3E

GOLD			%	FAT % PRT
2-02	2	305	20180	3.5 715 3.0 598
5-10	2	305	30520	4.0 1229 3.0 907
		313	31050	4.0 1247 3.0 923
6-10	2	305	30070	3.5 1044 3.0 905
8-10	2	305	31370	3.3 1040 2.7 845
		365	36640	3.3 1219 2.7 990
10-08	2	305	28280	3.4 955 2.6 740
		357	31230	3.4 1048 2.6 821
LIFE	2982	243110	3.6	8748 2.9 7095

Sunny Acres

DOUG & KATHE EVANS & FAMILY

4106 Davenport Rd., Georgetown, NY 13072

315.837.4777 • Andrew Cell 315.750.0719 • Gregory Cell 315.456.8283

sunnyacresayrshires@gmail.com

SUNNY-ACRES LL KYLIE

EXCELLENT-92 2E



SUNNY-ACRES LL KYLIE

PUREBRED AYRSHIRE		07/07/11 FEMALE	
100619100 4-08 92 2E		P8 +436	
NM\$	+84		
PTA	+2.98SCC	+1.8PPL	+0.1DPR
PTA	+848M	-6F	+6P 50R
PTA\$	+84CY		8/16
PTA%		-.20	-.10
PTAT	+1.20T		61R 8/16
PPA	+3631M	+15F	+55P
CLASS	ST6 SR7 BD6 DF6 RA4 RW7 LS5 FA7		
	FU7 UH8 UW7 UC6 UD5 TP6 TL3 LR7		
GOLD		%	FAT % PRT
2-00	2 305 20970 3.4	722	3.0 619
	313 21450 3.4	739	3.0 634
3-00	2 305 29000 3.3	961	2.8 810
	365 34250 3.3	1139	2.8 973
4-07	PROJ 25348 3.5	885	2.7 689

LIBBY'S LOCHINVAR

100543021			
PTA	+3.00SCC	-0.5PL	-0.6DPR
PTA	+816M	+1F	+10P 92R
			8/16
PTA%		-.16	-.08
PTAT	+1.60T		85R 8/16
D/AV	19976M 3.7	742F 3.0	605P 8.5T

SUNNY-ACRES MASTER KENDRA

100536296		7-05 93		3E	
GOLD		%	FAT	%	PRT
2-02	2 328	21270	3.5	741	3.0 641
3-03	2 289	22290	3.6	795	3.0 672
4-03	2 307	27530	3.9	1081	3.0 828
5-02	2 330	28890	4.3	1250	3.1 884
6-03	2 365	31540	3.7	1182	3.0 954
7-04	2 292	23190	3.7	852	2.9 666
LIFE	1911	154710	3.8	5901	3.0 4645

3RD SPRING CALF - 2008 MID-ATLANTIC NATIONAL
 3RD JR 3-YEAR-OLD - 2011 MID-ATLANTIC NAT'L
 2ND 4-YEAR-OLD - 2012 MID-ATLANTIC NATIONAL
 3RD 5-YEAR-OLD - 2013 MID-ATLANTIC NATIONAL

GRANDDAM:

SUNNY-ACRES BRENDAN'S KINETA

100283769		4-11 85			
GOLD		%	FAT	%	PRT
2-02	2 365	22380	3.5	773	3.0 668
3-08	2 334	24180	3.7	893	3.3 808
4-09	2 296	19360	3.0	573	3.3 641
5-08	2 209	14770	3.6	535	3.2 471

Sunny Acres

DOUG & KATHE EVANS & FAMILY

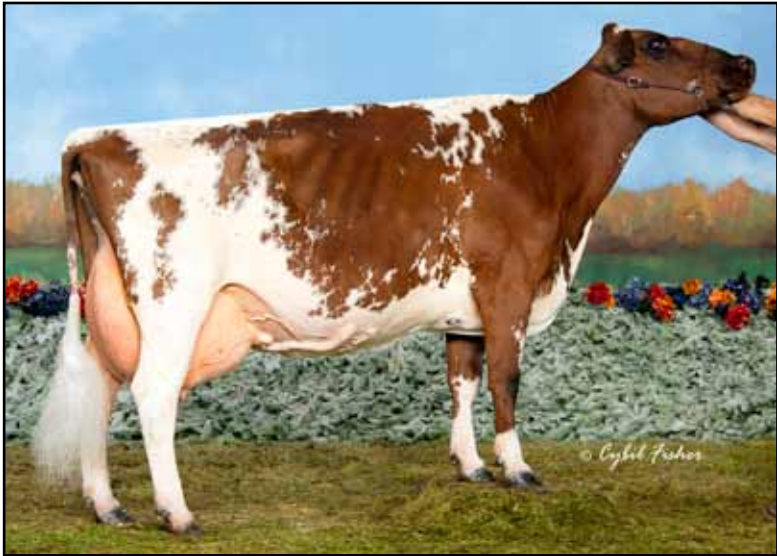
4106 Davenport Rd., Georgetown, NY 13072

315.837.4777 • Andrew Cell 315.750.0719 • Gregory Cell 315.456.8283

sunnyacresayrshires@gmail.com

GRAND-VIEW BBBK DREAMER

EXCELLENT-93 4E



GRAND-VIEW BBBK DREAMER

PUREBRED AYRSHIRE 09/11/06 FEMALE
 100463697 9-03 94 4E P5 +394
 NM\$ -43
 PTA +3.08SCC +2.7PL -0.4DPR
 PTA -1056M -25F -19P 66R
 PTA\$ -43CY 8/16
 PTA%
 PTAT +1.80T 73R 8/16
 PPA -2064M -12F -28P

CLASS	ST7	SR7	BD8	DF7	RA4	RW8	LS4	FA6
	FU6	UH7	UW7	UC7	UD5	TP6	TL6	LR7
GOLD								
				%	FAT	%	PRT	
2-06	2	305	14610	4.4	646	3.3	489	
		334	15770	4.5	702	3.4	531	
3-06	2	305	16510	3.6	598	3.3	541	
		364	17560	3.6	640	3.3	581	
4-09	2	305	21150	4.5	958	3.3	695	
		365	24310	4.4	1059	3.3	807	
6-08	2	305	20170	4.1	835	3.2	650	
		365	23650	4.1	964	3.3	774	
8-08	2	305	21900	3.5	769	3.3	715	
		365	26050	3.6	948	3.3	856	
LIFE	2053	116990	4.0	4687	3.3	3904		

3RD FALL YEARLING - 2008 CENTRAL NATIONAL
 HM ALL-AMERICAN FALL YEARLING - 2008
 1ST-2010 WDE INTERNATIONAL FUTURITY
 NOM ALL-AMERICAN AGED COW-2015

8 GENERATIONS EX - HAS 6 EX DAUGHTERS

IVF EMBRYOS AVAILABLE: SORTED DEMPSY,
 SORTED REALITY, SORTED BURDETTE,
 CONVENTIONAL BURDETTE

BLACKADDAR B B KELLOGG

777850C
 PTA +3.13SCC -0.3PL -0.3DPR
 PTA -936M -44F -21P 98R
 PTA% -0.04 +0.05
 PTAT +1.00T 97R 8/16
 D/AV 17810M 3.9 688F 3.2 569P

GRAND-VIEW CORNELIUS DRAMA

100261866 7-02 91

GOLD			%	FAT	%	PRT
2-03	2	312	16510	4.1	680	3.2
3-03	2	268	13910	4.0	554	3.2
4-03	2	305	17950	4.0	715	3.2
5-06	2	314	21560	4.0	856	3.1
6-06	2	279	21450	4.0	857	3.0

GRANDDAM: GRAND-VIEW OLY 2 DIVA

100033814 11-07 90 2E

GOLD			%	FAT	%	PRT
5-02	2	295	18870	4.3	804	2.9
6-02	2	331	19390	4.0	773	3.1
7-03	2	301	17930	4.1	736	3.0
8-03	2	305	18430	4.1	748	3.0
LIFE	3462	205340	4.1	8405	3.0	6067

DREAMER'S ALL-AMERICAN DAUGHTER,
 DEA EX-91, HAS IVF EMBRYOS AVAILABLE
 - SORTED REALITY & SORTED PREDATOR

Grand-View Ayrshires
TIM & KATIE BUSCH
 N6470 County Road C
 Cecil, WI 54111
 (920) 609-7476
 tb1972@frontiernet.net

GRAND-VIEW SUMTOTAL DIVOT

EXCELLENT-94 3E



GRAND-VIEW SUMTOTAL DIVOT

PUREBRED AYRSHIRE 10/06/07 FEMALE
 100505762 7-06 94 3E P7 +416
 NM\$ -32
 PTA +2.95SCC +0.8PFL -0.6DPR
 PTA -433M -18F -10P 53R
 PTA\$ -32CY 8/16
 PTA%
 PTAT +1.60T 65R 8/16
 PPA +1010M +28F +41P

CLASS	ST8	SR6	BD7	DF7	RA4	RW9	LS5	FA4
	FU6	UH7	UW8	UC6	UD5	TP6	TL2	LR7
GOLD								
2-05	2	305	19310	4.0	773	3.2	613	
		365	22870	4.0	926	3.2	737	
3-11	2	305	22930	3.9	905	3.2	742	
		365	26430	3.9	1027	3.3	863	
5-10	2	305	25230	3.8	963	3.2	799	
		365	29390	3.8	1113	3.2	942	
7-05	2	305	21770	3.6	780	3.2	694	
		365	25220	3.6	914	3.2	819	
LIFE	1914	127280	3.9	4964	3.3	4219		

1ST FALL YEARLING-2009 INTERNATIONAL JR
 RESERVE JR CHAMPION-2009 INTERNATIONAL JR
 JR ALL-AMERICAN FALL YEARLING - 2009
 1ST SR 3-YEAR-OLD - 2011 SOUTHERN NATIONAL
 INT CHAMPION - 2011 SOUTHERN NATIONAL
 RES GRAND CHAMPION - 2011 SOUTHERN NATIONAL
 NOM ALL-AMERICAN SR 3-YEAR-OLD - 2011
 NOM ALL-AMERICAN 4-YEAR-OLD - 2012
 3RD 100,000 LB COW - 2015 INTERNATIONAL
 TOTAL PERFORMANCE WINNER - 2015 INTERNA-
 TIONAL
 HM ALL-AMERICAN 100,000 LB COW - 2015

MAPLE-DELL SUM TOTAL-ET

100397787
 PTA +3.15SCC -0.5PL -0.8DPR
 PTA -432M -22F -9P 79R
 PTA% -0.04 +0.02
 PTAT +1.20T 72R 8/16
 D/AV 19550M 3.7 733F 3.1 604P

GRAND-VIEW PADDY DECEMBER

100197592 6-08 90

GOLD				FAT	%	PRT
2-02	2	295	14030	4.1	570	3.0 420
3-02	2	365	18230	4.1	745	3.1 558
4-04	2	270	14990	3.7	559	3.0 456
5-03	2	305	15060	4.2	634	3.2 482
		311	15210	4.2	640	3.2 488
6-04	2	305	20540	3.9	796	3.1 641

GRANDDAM: GRAND-VIEW OLY 2 DIVA

100033814 11-07 90 2E

GOLD				FAT	%	PRT
2-00	2	280	14810	3.9	578	2.8 416
3-00	2	313	17500	3.9	683	3.0 517
4-00	2	355	19030	4.2	798	3.0 570
5-02	2	295	18870	4.3	804	2.9 547
6-02	2	331	19390	4.0	773	3.1 597
7-03	2	301	17930	4.1	736	3.0 530
8-03	2	305	18430	4.1	748	3.0 560
LIFE	3462	205340	4.1	8405	3.0 6067	

DIVOT IS 8 GENERATIONS EXCELLENT
 WILL IVF THIS FALL TO SORTED
 DISTINCTION

Grand-View Ayrshires

TIM & KATIE BUSCH

N6470 County Road C

Cecil, WI 54111

(920) 609-7476

tb1972@frontiernet.net

HAWKSFIELD GVA PARDNER BLUE-ET

EXCELLENT-91 2E



HAWKSFIELD GVA PARDNER BLUE-ET

AYRSHIRE 06/20/09 FEMALE
 100576838 7-00 91 2E P7 +426
 NM\$ +142
 PTA +2.76SCC +1.0PL +1.2DPR
 PTA +10M +20F +4P 50R
 PTA\$ +142CY 8/16
 PTA%
 PTAT -.10T 58R 8/16
 PPA +806M +100F +20P

CLASS	ST8	SR7	BD9	DF9	RA5	RW6	LS6	FA6
	FU6	UH8	UW8	UC8	UD4	TP4	TL5	LR8
GOLD				%	FAT	%	PRT	
2-01	2	305	18940	4.2	801	3.2	598	
		337	20700	4.2	877	3.2	657	
3-02	2	303	22530	4.1	919	3.1	700	
4-02	2	305	20810	4.1	863	3.2	662	
		325	21670	4.1	894	3.2	693	
5-03	2	289	23020	4.3	993	3.2	735	
6-03	2	288	24780	4.5	1118	3.0	742	
LIFE	1542	112700	4.3	4801	3.1	3527		

NOM ALL-AMERICAN SUMMER YEARLING-2010

7 GENERATIONS EXCELLENT

BLUE & HER DAUGHTER GRAND-VIEW
 BURDETTE BURGANDY EX-92, EX 93 MS
 WILL BE FLUSHED THIS FALL.

WOODLAND VIEW PARDNER-ET

811799C
 PTA +2.95SCC +0.7PL -1.6DPR
 PTA +228M +16F +4P 98R
 PTA% +.04 -.02
 PTAT 97R 8/16
 D/AV 19271M 3.9 750F 3.1 601P 8.4T

HAWKSFIELD SHARON BUDROSE

1017240 6-00 92 2E

GOLD			%	FAT	%	PRT
2-02	2	305	13730	4.2	581	3.7
3-04	2	333	17790	3.7	664	3.3
4-04	2	365	19810	4.2	837	3.3
5-04	2	305	19840	3.7	736	3.2
6-10	2	325	23340	4.1	954	3.1
8-01	2	311	12620	4.0	504	3.5
9-01	2	305	23280	5.6	1308	4.0
LIFE	2484	142060	4.3	6076	3.4	4832

GRANDDAM: ENGLAN ROYAL COMMAND BUD

912613 13-02 95 3E

DHIR			%	FAT	%	PRT
5-03	2	340	18910	3.7	691	3.3
6-05	2	318	21490	3.8	820	3.2
7-04	2	356	23770	3.7	882	3.2
11-04	0	365	19560	5.0	977	3.2
LIFE	2349	118950	4.0	4802	3.3	3957

Grand-View Ayrshires

TIM & KATIE BUSCH

N6470 County Road C

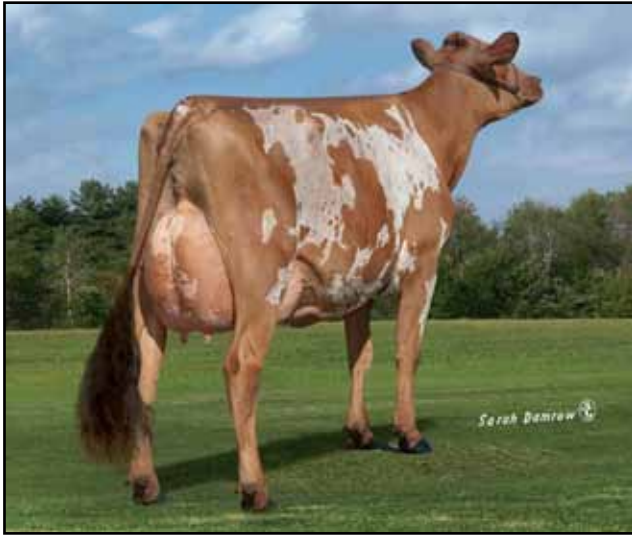
Cecil, WI 54111

(920) 609-7476

tb1972@frontiernet.net

GRAND-VIEW BURDETTA RITA

EXCELLENT-92



GRAND-VIEW BURDETTA RITA

PUREBRED AYRSHIRE 03/05/12 FEMALE
 100641671 4-04 92 P9 +490
 NM\$ +195
 PTA +2.91SCC +2.1PL +0.1DPR
 PTA +388M +13F +17P 57R
 PTA\$ +195CY 8/16
 PTA%
 PTAT +1.50T -.01 +.03
 PTAT +1325M +9F 55R 8/16
 PPA +45P
 CLASS ST8 SR8 BD7 DF8 RA5 RW7 LS6 FA6
 FU8 UH8 UW8 UC6 UD6 TP5 TL5 LR8
 GOLD % FAT % PRT
 2-00 2 298 18980 4.1 770 3.2 602
 3-00 2 300 21530 3.4 731 3.2 688

#72 8/16 HIGH CPI LIST
 GRAND CHAMPION, 2016 WI STATE SHOW

IVF EMBRYOS AVAILABLE -
 SORTED REMINGTON

PALMYRA TRI-STAR BURDETTE-ET

100419568
 PTA +2.88SCC +1.2PL +0.2DPR
 PTA +261M +6F +14P 99R
 PTA% -.02 +.03
 PTAT +1.80T 98R 8/16
 D/AV 19864M 3.9 778F 3.2 630P 8.5T

PALMYRA ROMEO'S RAMONA-ET

66878400 3-09 85
 GOLD % FAT % PRT
 2-06 2 333 22290 4.0 899 3.0 666
 3-06 2 316 21020 3.9 826 3.1 653
 4-08 2 278 19470 3.7 715 3.0 579
 5-07 2 297 22510 3.9 887 3.1 691

SISTER TO REALITY, RAMIUS, RONDO &
 RANEY

GRANDDAM: GALNEY-EPC L.H. ROSY-ET

100110610 3-09 90
 GOLD % FAT % PRT
 2-00 2 305 21110 3.7 779 2.9 621
 365 25010 3.7 920 3.0 745
 3-03 2 365 30679 3.9 1210 3.2 969
 4-06 2 305 29510 3.7 1086 3.0 887
 365 32980 3.8 1238 3.1 1014
 5-08 2 365 29185 3.9 1125 3.1 918
 LIFE 1684 126800 3.8 4806 3.1 3970

ALL-AMERICAN FALL YEARLING IN MILK - 2001
 JR ALL-AMERICAN FALL YEARLING IN MILK - 2001
 NOM JR ALL-AMERICAN SR 2-YEAR-OLD - 2002

Grand-View Ayrshires

TIM & KATIE BUSCH

N6470 County Road C

Cecil, WI 54111

(920) 609-7476

tb1972@frontiernet.net

GATTON PADDY CHERRY

EXCELLENT-94 4E



GATTON PADDY CHERRY

PUREBRED AYRSHIRE 07/24/04 FEMALE
 100373752 11-01 94 4E P9 +421
 NM\$ +110
 PTA +2.86SCC +2.9PFL +0.7DPR
 PTA -44M +0F +2P 60R
 PTA\$ +110CY 8/16
 PTA%
 PTAT +.60T 56R 8/16
 PPA +3123M +83F +81P
 CLASS ST6 SR8 BD8 DF9 RA4 RW8 LS5 FA6
 FU5 UH6 UW7 UC9 UD4 TP8 TL4 LR5
 GOLD % FAT % PRT
 2-01 2 304 17480 3.9 688 3.2 554
 3-01 2 320 16910 3.8 639 3.2 548
 4-01 2 305 19820 3.7 739 3.2 636
 5-01 2 365 22010 3.7 813 3.1 689
 7-02 2 305 15310 3.4 520 2.9 441
 9-01 2 365 23090 3.5 816 3.0 704
 10-09 2 365 21380 3.8 805 2.8 607
 LIFE 2991 157922 3.7 5787 3.1 4895

3RD JR 3-YEAR-OLD - 2007 CENTRAL NATIONAL
 1ST JR 3-YEAR-OLD - 2007 SOUTHERN NATIONAL
 HM ALL-AMERICAN JR 3-YEAR-OLD - 2007
 1ST 4-YEAR-OLD - 2008 SOUTHERN NATIONAL
 NOM ALL-AMERICAN 4-YEAR-OLD - 2008
 2ND 5-YEAR-OLD - 2009 MID-ATLANTIC NATIONAL
 2ND 5-YEAR-OLD - 2009 SOUTHERN NATIONAL
 NOM ALL-AMERICAN 5-YEAR-OLD - 2009
 2ND AGED COW - 2011 SOUTHERN NATIONAL
 1ST 100,000 LB COW - 2013 SOUTHERN NATIONAL
 NOM ALL-AMERICAN 100,000 LB COW - 2013
 1ST 100,000 LB COW - 2015 SOUTHERN NATIONAL
 NOM ALL-AMERICAN 100,000 LB COW - 2015

WOODLAND-VIEW PADDY 2-ET

10012065C
 PTA +2.87SCC -0.9PFL -2.3DPR
 PTA -254M -10F -4P 90R
 PTA% +.02
 PTAT +.30T 81R 8/16
 D/AV 18327M 3.8 699F 3.1 576P 8.4T

SOUTHWOOD CHIPPER CINNAMON

100131268 3-01 84
 GOLD % FAT % PRT
 2-04 2 305 14810 3.6 540 3.2 472
 343 16130 3.7 598 3.2 518
 3-06 2 271 15700 3.9 611 3.1 479

GRANDDAM: ROYAL-R J.P. CHIPPER

100024238 5-01 88
 GOLD % FAT % PRT
 2-03 2 291 15620 3.7 583 3.2 497
 3-02 2 305 15450 3.8 584 3.2 501
 365 16470 3.8 627 3.3 541

NOM JR ALL-AMERICAN SR 2-YEAR-OLD - 2000

CONVENTIONAL PRIME & IVF SORTED
 VICKING EMBRYOS AVAILABLE. PLANNING
 TO IVF TO WILTON IN SPRING 2017.

CHERRY'S DAUGHTERS:

GATTON BB KELLOGG CHERUB, EX 91 3E
 2ND FALL YEARLING IN MILK, 2009
 STILL-DREAMN HB JACK CHAMPANE,
 VG-87@2-09
 2ND FALL YRLG IN MILK, 2015 SOUTHERN NAT'L

Still Dreamn Dairy
JESSICA GATTON-DIXON & BRETT DIXON
 PO BOX 39, CONWAY, MO 65632
 (417) 844-7217
 stilldreamndairy@hotmail.com

KLER-VU RAMIUS CHRISTMAS

EXCELLENT-93 2E



KLER-VU RAMIUS CHRISTMAS

PUREBRED AYRSHIRE 12/24/09 FEMALE
 69247784 5-06 93 2E P9 +458
 NM\$ +113
 PTA +3.29SCC +0.1PL +1.1DPR
 PTA +433M +20F +12P 47R
 PTA\$ +113CY 8/16
 PTA% +.02 -.01
 PTAT +.60T 45R 8/16
 PPA +1448M +54F +41P
 CLASS ST9 SR7 BD7 DF6 RA3 RW7 LS5 FA7
 FU6 UH6 UW7 UC6 UD5 TP5 TL4 LR8
 GOLD % FAT % PRT
 2-02 3 305 25050 3.6 913 3.1 784
 340 26650 3.7 983 3.1 838
 3-02 2 305 23170 4.3 1005 3.0 693

2ND WINTER CALF-2010 EASTERN STATES NATL
 1ST WINTER YEARLING-2011 INTERNATIONAL
 ALL-AMERICAN WINTER YEARLING - 2011
 1ST SR 2-YEAR-OLD - 2012 INTERNATIONAL
 ALL-AMERICAN (TIE) SR 2-YEAR-OLD - 2012
 1ST SR 3-YEAR-OLD - 2013 INTERNATIONAL
 INTERMEDIATE CHAMPION - 2013 INTERNATIONAL
 ALL-AMERICAN SR 3-YEAR-OLD - 2013

GALNEY-EPC GALANT RAMIUS

100216624
 PTA +3.54SCC +0.6PL +2.0DPR
 PTA -53M -5F +1P 96R
 PTA% -.02 +.01
 PTAT +1.10T 95R 8/16
 D/AV 19273M 3.9 746F 3.1 607P 8.5T

PINEVILLE-FARM PARDNER LEXUS

100519361 5-06 92
 GOLD % FAT % PRT
 2-07 3 305 26180 4.2 1109 3.1 818
 4-02 3 305 22030 4.5 993 3.1 680
 312 22420 4.5 1010 3.1 695
 5-02 3 305 36430 3.9 1414 2.9 1043
 365 44520 4.1 1840 2.9 1280
 6-02 3 305 36280 4.6 1686 3.0 1101
 LIFE 1573 142650 4.4 6207 3.1 4378

GRANDDAM:

PINEVILLE-FARM HEXEL

100241312 5-03 83
 GOLD % FAT % PRT
 2-02 2 276 18100 4.2 754 3.1 562
 3-01 2 316 23260 4.2 984 3.1 721
 4-02 2 350 24990 4.2 1044 3.2 789
 5-03 2 306 18630 4.1 773 3.1 570
 6-03 2 305 17940 3.9 701 3.0 544
 7-06 2 326 14590 4.0 589 3.2 469
 LIFE 1992 120580 4.1 4981 3.1 3766

Kler-Vu Dairy

TOM GILLETTE

5137 Old Route 12, Lyonsfalls, NY 13368

(315) 982-7707

t.gillette45@frontier.com

KLER-VU JELLY BEAN

EXCELLENT-92 3E



KLER-VU JELLY BEAN

PUREBRED AYRSHIRE 01/14/08 FEMALE
 65269863 8-02 92 3E P- +362

NM\$ -62
 PTA +2.93SCC +1.8PPL +1.4DPR
 PTA -810M -20F -24P 48R
 PTA\$ -62CY 8/16
 PTA%
 PTAT +.80T +.06 +.01 46R 8/16
 PPA -772M -7F -18P

CLASS ST8 SR7 BD8 DF8 RA6 RW7 LS3 FA7
 FU7 UH8 UW7 UC7 UD4 TP7 TL6 LR8

GOLD % FAT % PRT

2-09	2	305	19830	4.2	842	3.3	652
		365	22910	4.5	1035	3.3	763
3-10	3	305	20190	4.7	958	3.3	660
		343	21270	4.8	1021	3.3	701
4-11	2	305	23120	3.8	871	3.0	701
6-01	2	305	23390	3.9	921	3.0	697
7-04	2	305	24460	3.6	877	3.0	743
LIFE	1934	133436	4.1	5449	3.2	4231	

KELLCREST AVENGER-ET

100273427
 PTA +2.73SCC +4.2PL +2.1DPR
 PTA -102M +5F -3P 96R
 PTA% +.05
 PTAT +.50T 91R 8/16
 D/AV 18311M 4.0 724F 3.1 573P 8.4T

WOODLAND VIEW JELLY

100107898 5-01 91

GRANDDAM: WOODLAND VIEW J ANDREA 5-ET

724524C VG-85 CAN
 LIFE 135701 3.9 5329 3.3 4418

WILL BE FLUSHED IN THE FUTURE

Kler-Vu Dairy

TOM GILLETTE

5137 Old Route 12, Lyonsfalls, NY 13368

(315) 982-7707

t.gillette45@frontier.com

EMERALD FARMS STAR CLOVER

EXCELLENT-92 3E



EMERALD-FARMS STAR CLOVER

PUREBRED AYRSHIRE 12/18/03 FEMALE
 100339563 11-05 92 3E ELITE P9 +449
 NM\$ +328
 PTA +2.71SCC +3.5PL +1.6DPR 48R
 PTA +351M +24F +24P 8/16
 PTA\$ +328CY
 PTA%
 PTAT -.70T 46R 8/16
 PPA +3377M +165F +136P
 CLASS ST8 SR6 BD8 DF9 RA5 RW8 LS6 FA7
 FU7 UH6 UW7 UC6 UD3 TP7 TL6 LR7
 GOLD % FAT % PRT
 2-01 2 305 20800 4.5 946 3.3 680
 327 22650 4.5 1025 3.3 750
 3-02 2 305 21750 4.2 924 3.3 724
 365 24790 4.2 1051 3.4 848
 4-08 2 305 19200 4.2 822 3.5 674
 365 21750 4.3 926 3.6 773
 5-10 2 305 19770 3.8 752 3.5 686
 365 22060 3.8 829 3.5 766
 7-03 2 305 25420 4.1 1048 3.1 789
 365 29560 4.2 1229 3.2 934
 8-06 2 305 24810 4.1 1008 3.2 803
 365 28650 4.2 1198 3.3 944
 9-08 2 305 23520 3.9 924 3.3 769
 11-03 2 305 19600 4.0 785 3.3 646
 365 21660 3.9 851 3.3 720
 LIFE 3448 216380 4.1 8839 3.4 7292

PALMYRA WANDERING STAR

100211151

LEMOLA GALLAGER CLOVER

100232790 5-01 86
 GOLD % FAT % PRT
 2-01 2 365 14810 4.0 588 3.2 468
 3-06 2 365 17690 4.1 721 3.3 585
 4-09 2 330 14200 3.8 537 3.5 502
 5-10 2 335 22360 3.3 745 3.3 743
 6-11 2 365 18570 3.7 682 3.3 616
 8-09 2 365 21590 3.8 824 3.2 696
 LIFE 2421 121510 3.8 4659 3.4 4080

 NOM ALL-AMERICAN SR 2-YEAR-OLD - 2004
 2ND SR 3-YEAR-OLD - 2005 SOUTHERN NATL JR
 HM JR ALL-AMERICAN SR 3-YEAR-OLD - 2005

GRANDDAM: LEMOLA CARL CARLY

100068285 14-03 92 6E
 DHI % FAT % PRT
 2-11 2 329 13330 4.8 639 3.3 443
 3-11 2 335 9780 4.8 466 3.7 360
 5-00 2 355 11790 4.5 527 3.5 410
 8-00 2 298 19290 4.1 784 3.3 643
 9-00 2 345 20640 4.2 866 3.4 710
 10-06 2 305 16150 4.9 792 3.2 520
 11-09 2 305 14830 5.2 766 3.4 502
 LIFE 3135 135370 4.6 6188 3.4 4610

Emerald Farms
 THE FENTON & JODREY FAMILIES
 22050 SR 136, Winchester, OH 45697
 (937) 695-0697

Doug: (937) 205-1209
 Tom: (937) 217-0287

Ron: (937) 725-5333
 Joann: (937) 217-0697

EMERALD FARMS POKERS SWEETHING EXCELLENT-93



EMERALD-FARMS POKERS SWEETHING

PUREBRED AYRSHIRE 10/03/11 FEMALE
100631647 4-11 93 P8 +450
NM\$ +98
PTA +2.98SCC +0.8PFL -0.6DPR
PTA +80M +11F +6P 49R
PTA\$ +98CY 8/16
PTA%
PTAT +1.10T 53R 8/16
PPA +2407M +144F +91P
CLASS ST9 SR8 BD9 DF8 RA5 RW8 LS6 FA6
FU9 UH8 UW9 UC8 UD7 TP5 TL4 LR9
GOLD % FAT % PRT
1-11 2 305 15080 4.7 712 3.3 495
3-06 2 305 18040 4.2 757 3.3 594
365 20260 4.3 862 3.3 678

JR ALL-AMERICAN FALL CALF - 2012
NOM JR ALL-AMERICAN FALL YRLG IN MILK - 2013
3RD SR 2 - 2014 CENTRAL NATIONAL JR
1ST SR 2-OLD - 2014 SOUTHERN NATIONAL JR
INTERMEDIATE CHAMP - 2014 SOUTHERN NAT'L JR
1ST SR 2-YEAR-OLD - 2014 SOUTHERN NATIONAL
HM JR ALL-AMERICAN SR 2-YEAR-OLD - 2014
3RD SR 3-YEAR-OLD - 2015 CENTRAL NAT'L JR
1ST SR 3-YEAR-OLD - 2015 SOUTHERN NAT'L JR
INTERMEDIATE CHAMP - 2015 SOUTHERN NAT'L JR
RES GRAND CHAMPION - 2015 SOUTHERN NAT'L JR
1ST SR 3-YEAR-OLD - 2015 SOUTHERN NAT'L JR
NOM ALL-AMERICAN SR 3-YEAR-OLD - 2015
HM JR ALL-AMERICAN SR 3-YEAR-OLD - 2015
GRAND & SR CHAMPION 2016 OHIO STATE FAIR
1ST FOUR YEAR OLD-2016 OHIO STATE FAIR
2ND 4-YEAR-OLD - 2016 CENTRAL NATIONAL JR
1ST 4-YEAR-OLD - 2016 SOUTHERN NATIONAL JR
SENIOR CHAMPION - 2016 SOUTHERN NATIONAL JR
GRAND CHAMPION - 2016 SOUTHERN NATIONAL JR
2ND 4-YEAR-OLD - 2016 SOUTHERN NATIONAL
RES SENIOR CHAMPION - 2016 SOUTHERN NATIONAL

DES CHAMOIS POKER-ET

8401621C
PTA +2.83SCC +0.9PFL -1.9DPR
PTA +28M +15F +0P 98R
PTA% +.07
PTAT +.40T 97R 8/16
D/AV 19334M 4.0 767F 3.1 608P 8.5T

EMERALD-FARMS KELLYBUCK SWEET

100570252
GOLD % FAT % PRT
2-06 2 301 13960 3.6 509 3.0 416
3-05 2 221 9950 3.5 348 3.2 323

3RD SPRING YRLG - 2010 CENTRAL NATIONAL JR
1ST SPRING YRLG - 2010 SOUTHERN NATIONAL JR
HM JR ALL-AMERICAN SPRING YEARLING - 2010
1ST JR 3 - 2012 SOUTHERN NATIONAL JR
NOM JR ALL-AMERICAN JR 3-YEAR-OLD - 2012

GRANDDAM:

EMERALD-FARMS ESPECIALLY SWEET

100339189 3-11 87
GOLD % FAT % PRT
2-02 2 365 13590 4.5 607 3.2 435
3-09 2 327 16080 4.5 725 3.2 507
4-10 2 341 17190 4.3 742 3.2 544
6-02 2 314 15670 4.3 671 3.1 492
7-02 2 308 15760 3.9 612 3.1 484
LIFE 2065 100710 4.4 4407 3.2 3203

UNAN JR ALL-AMERICAN AGED COW - 2011

Emerald Farms
THE FENTON & JODREY FAMILIES
22050 SR 136, Winchester, OH 45697
(937) 695-0697

Doug: (937) 205-1209
Tom: (937) 217-0287

Ron: (937) 725-5333
Joann: (937) 217-0697

MACKINSON OBLIQUE DARCY-ET

EXCELLENT-91 2E



MACKINSON OBLIQUE DARCY-ET

95.97% AYRSHIRE 03/04/11 FEMALE
 100615544
 5-08 91 2E P9 +447

NM\$	-48							
PTA	+2.93SCC	-2.1PL	+0.9DPR					
PTA	+113M	+0F	+0P	49R				
PTA\$	-48CY				8/16			
PTA%								
PTAT	+1.60T	-.02	-.02					
PPA	+2286M	+11F	+37P	54R	8/16			
CLASS	ST7	SR5	BD7	DF8	RA4	RW8	LS5	FA6
	FU6	UH8	UW7	UC6	UD5	TP6	TL4	LR8
DHI				%	FAT	%	PRT	
	2-02	2	305	18250	3.3	604	2.9	537
	3-04	2	305	18060	3.1	554	2.8	498

RES ALL-AMERICAN SPRING CALF - 2011
 UNAN JR ALL-AMERICAN SPRING CALF - 2011
 JUNIOR CHAMPION - 2012 SOUTHERN NATL JR
 NOM ALL-AMERICAN SPRING YEARLING - 2012
 JR ALL-AMERICAN SPRING YEARLING - 2012
 2ND JR 2-YEAR-OLD - 2013 CENTRAL NATL JR
 RES JR ALL-AMERICAN JR 2-YEAR-OLD - 2013

DARCY DAUGHTERS:

MACKINSON FB DISNEY
 1ST FALL CALF & JR CHAMP - 2015 IL STATE FAIR
 HM JR ALL-AMERICAN FALL CALF- 2015
MACKINSON BURDETTE DIAMOND-ET
 NOM JR ALL-AMERICAN SPRING CALF - 2015
MACKINSON FB DINAH-ET
 4TH SPRING CALF - 2015 INTERNATIONAL
MACKINSON DOUBLE DECKER-ET
 1ST WINTER CALF & RES JR CHAMP - 2016 IL
 STATE FAIR
MACKINSON DOUBLE DARE-ET
 1ST WINTER CALF - 2016 WI STATE SHOW

JELYCA OBLIQUE

7407843C 91.95%
 PTA +2.86SCC +2.4PL +2.1DPR
 PTA +410M +43F +18P 95R
 PTA% +.14 +.02
 PTAT +.60T 92R 8/16
 D/AV 20705M 4.0 832F 3.2 656P 8.4T

GRAND-VIEW SAKIC DANZA

100420119 3-10 90
 DHI % FAT % PRT
 2-06 2 346 22100 4.0 880 3.1 680
 3-07 2 218 13400 3.5 467 3.0 405
 5-07 2 291 17570 3.4 598 3.3 584

GRANDDAM: GRAND-VIEW PADDY DECEMBER

100197592 6-08 90
 GOLD % FAT % PRT
 2-02 2 295 14030 4.1 570 3.0 420
 3-02 2 365 18230 4.1 745 3.1 558
 4-04 2 270 14990 3.7 559 3.0 456
 5-03 2 311 15210 4.2 640 3.2 488
 6-04 2 305 20540 3.9 796 3.1 641

DARCY DAUGHTERS:

MACKINSON FB DISNEY
 1ST FALL CALF & JR CHAMP - 2015 IL STATE
 FAIR
MACKINSON BURDETTE DYNAMITE-ET
 2ND FALL CALF & RES JR CHAMP - 2016 IA STATE
 FAIR
MACKINSON DAY DREAMER-ET
 2ND SPRING CALF - 2016 IL STATE FAIR

WILL BE IVF'D THIS FALL
 INQUIRIES WELCOME.

Mackinson Dairy Farm

MATTHEW MACKINSON & MARY MACKINSON-FABER

17427 E 2125 N ROAD, PONTIAC, IL 61764

Mary Cell: (309-533-1814)

Matt Cell: (815-830-4464)

E-mail: mackinson.mary@gmail.com

IOW-AYR MR AFTON WILLOW

VERY GOOD-87



IOW-AYR MR AFTON WILLOW

94.9% AYRSHIRE 07/13/13 FEMALE
 72616221 3-04 87 P6 +432
 PTA +2.90SCC -0.1PL -0.6DPR
 PTA +393M +6F +6P 38R
 PTA\$ +57CY 8/16
 PTA% -.05 -.03
 PTAT +.50T 44R 8/16
 PFA +2563M +70F +54P
 CLASS ST6 SR6 BD7 DF6 RA4 RW6 LS6 FA8
 FU6 UH5 UW5 UC7 UD7 TP6 TL3 LR7
 DHI % FAT % PRT
 1-10 3 305 20980 3.8 800 3.0 633
 365 24850 3.9 958 3.0 749

EDGEBROOK CALIMERO MR AFTON

100668645 95.37%

IOW-AYR ADMISSION WILLOW 4723

70616797 94.43%
 2-02

GRANDDAM: KAR-AYR POKER WILLOW

65004528

DHI	%	FAT	%	PRT
1-11 3 305	16920 4.3	728 3.1	523	
	322 17610 4.3	765 3.1	546	

Yarrabee Cows LLC

THE MAYNARD LANG FAMILY

1832 400th Ave., Brooklyn, IA 52211

Eric (641) 990-6977 • Dane (641) 990-5096

ericwang@hotmail.com • dane.m.lang@gmail.com

RIGHT-ANGLE HARLEY

EXCELLENT-94 5E



RIGHT-ANGLE HARLEY

PUREBRED AYRSHIRE		03/12/04 FEMALE	
100364699 12-00 94		5E P- +368	
NM\$	-177		
PTA	+3.18SCC	-1.3PL	+1.1DPR
PTA	-236M	-30F	-12P 58R
PTA\$	-177CY		8/16
PTA%			
PTAT	+ .70T		52R 8/16
PPA	-1057M	-80F	-32P
CLASS	ST9 SR8 BD9 DF8 RA5 RW9 LS6 FA7		
	FU6 UH9 UW9 UC7 UD6 TP7 TL7 LR8		
DHI		%	FAT % PRT
2-00	2 281	14290 3.7	526 3.3 465
2-11	2 305	16980 3.3	552 3.2 549
	346	18410 3.4	624 3.3 605
4-02	2 305	15321 3.9	599 4.0 610
5-06	2 305	21145 3.6	764 3.3 692
	354	23429 3.6	850 3.3 766
7-02	3 305	21310 3.3	711 3.4 719
8-03	3 305	23100 3.3	757 2.7 628
	317	23600 3.3	773 2.7 641
9-04	3 285	20690 4.3	894 3.5 719
10-11	3 286	18840 3.1	588 2.9 555
LIFE	2632	158799 3.5	5565 3.2 5080

OWNED WITH DAVE KOSS, EPWORTH, IA

RIGHT ANGLE BBBK TRAVELER

100226069	
PTA	+3.20SCC -1.9PL +0.1DPR
PTA	-417M -25F -12P 76R
PTA%	-.05 +.01
PTAT	+ .50T 64R 8/16
D/AV	18802M 3.9 728F 3.2 597P 8.7T

EXSELL EVOLUTION HYACINTHE

100207646 4-06 88	
GOLD	% FAT % PRT
3-07	3 304 23720 4.0 957 3.0 721
4-06	2 305 17710 4.3 764 3.2 575
5-09	3 279 13600 4.2 573 2.9 394

HARLEY SHOW HONORS:

- NOM ALL-AMERICAN SPRING YEARLING - 2005
- RES JR ALL-AMERICAN SPRING YEARLING - 2005
- NOM ALL-AMERICAN JR 2-YEAR-OLD - 2006
- RES JR ALL-AMERICAN JR 2-YEAR-OLD - 2006
- RES ALL-AMERICAN 4-YEAR-OLD - 2008
- RES SR CHAMPION - 2009 SOUTHERN NATIONAL
- RES GRAND CHAMPION - 2009 SOUTHERN NATIONAL
- RES ALL-AMERICAN 5-YEAR-OLD - 2009
- HM ALL-AMERICAN AGED COW - 2011
- RES ALL-AMERICAN AGED COW - 2012
- ALL WORLD 8-YEAR-OLD AND OVER - 2012
- RES ALL-AMERICAN 100,000 LB COW - 2013
- ALL WORLD 8-YEAR-OLD AND OVER - 2013
- 1ST 100,000 LB COW - 2015 INTERNATIONAL SENIOR CHAMPION - 2015 INTERNATIONAL
- UNAN ALL-AMERICAN 100,000 LB COW - 2015
- ALL WORLD 8-YEAR-OLD AND OVER - 2015
- 1ST PRODUCTION COW & HM GRAND CHAMPION 2016
- IA STATE FAIR

Yarrabee Cows LLC

THE MAYNARD LANG FAMILY

1832 400th Ave., Brooklyn, IA 52211

Eric (641) 990-6977 • Dane (641) 990-5096

ericwlang@hotmail.com • dane.m.lang@gmail.com

BONERT REGINA COELI



BONERT REGINA COELI

PUREBRED AYRSHIRE 08/10/12 FEMALE
 71758276 ELITE P6 +424
 NM\$ +318
 PTA +3.01SCC +1.5PL +0.1DPR
 PTA +1131M +43F +31P 42R
 PTA\$ +318CY 8/16
 PTA% -.03
 PPA +4196M +213F +111P

DHI	%	FAT	%	PRT
2-00 2 305	22540 4.0	907 3.3	734	
3-06 2 155	16382 4.4	724 2.9	477	

1ST 4 YEAR OLD - SR. CHAMPION & RESERVE
 GRAND CHAMPION - 2016 IL STATE FAIR

LIBBY'S LOCHINVAR

100543021
 PTA +3.00SCC -0.5PL -0.6DPR
 PTA +816M +1F +10P 92R
 PTA% -.16 -.08
 PTAT +1.60T 85R 8/16
 D/AV 19976M 3.7 742F 3.0 605P 8.5T

BONERT RAFFI 830

68978077

GRANDDAM: BONERT RYE 710

64616441 5-11 88

DHI	%	FAT	%	PRT
4-01 2 305	17550 4.4	774 3.6	629	
5-08 2 305	14510 4.3	621 3.4	494	
	314	14600 4.3	624 3.4	497
7-01 2 305	18770 4.8	909 3.3	624	

OWNED WITH DAVE KOSS, EPWORTH, IA

Yarrabee Cows LLC

THE MAYNARD LANG FAMILY

1832 400th Ave., Brooklyn, IA 52211

Eric (641) 990-6977 • Dane (641) 990-5096

ericwlang@hotmail.com • dane.m.lang@gmail.com

HALL'S MARKSMAN LILAC



HALL'S MARKSMAN LILAC

98.84% AYRSHIRE 07/22/15 FEMALE
840003134640731 P- +386

HALL'S OLD BANKSTOCK MARKSMAN-ET

69949936 97.68%
PTA +3.10SCC +0.3DPR
PTA -142M -10F -1P 46R
PTA% -.01 +.03
PTAT +1.50T 45R 8/16

RUMAR DETROIT LIMBO 2ND

100541542 5-03 91 2E
GOLD % FAT % PRT
2-08 2 305 17000 4.1 692 3.5 590
309 17120 4.1 699 3.5 597
3-09 2 305 16180 4.7 761 4.1 656
319 16570 4.7 778 4.1 674
5-00 2 305 16690 5.0 833 3.6 603
6-04 2 203 9200 4.1 381 3.5 318
7-01 2 305 11740 4.2 490 3.5 414
365 14030 4.1 572 3.5 495

GRANDDAM: SMITHBURN LIMBO

100097306 9-02 90
GOLD % FAT % PRT
3-00 2 294 14640 3.8 561 2.8 414
4-00 2 298 14640 3.7 545 2.9 427
4-10 2 271 14580 3.9 573 3.2 472
5-08 2 266 15350 3.8 583 3.3 499
6-07 2 303 14960 4.1 608 3.0 456
7-06 2 305 14610 3.8 556 3.1 452
338 15970 3.8 602 3.1 496
8-11 2 280 15540 3.7 572 2.9 447
LIFE 2070 106510 3.8 4091 3.0 3239

OWNED WITH DONNA MERTZ, BLAIR, NE
AND KAYLEE KOSS, EPWORTH, IA

Yarrabee Cows LLC

THE MAYNARD LANG FAMILY

1832 400th Ave., Brooklyn, IA 52211

Eric (641) 990-6977 • Dane (641) 990-5096

ericwlang@hotmail.com • dane.m.lang@gmail.com

S&M-AYR BURDETTE'S NEVADA

VERY GOOD-89



S&M-AYR BURDETTE'S NEVADA

96.68% AYRSHIRE 05/28/12 FEMALE
 100655328 3-11 89 P9 +506
 NM\$ +262
 PTA +2.88SCC +0.7PL +0.2DPR
 PTA +882M +27F +32P 46R
 PTA\$ +262CY 8/16
 PTA%
 PTAT +1.00T -.04 +.02 54R 8/16
 PPA +3216M +109F +107P
 CLASS ST7 SR4 BD6 DF6 RA5 RW7 LS6 FA5
 FU5 UH8 UW6 UC7 UD5 TP5 TL5 LR7
 GOLD % FAT % PRT
 2-04 2 305 19050 3.8 728 3.2 608
 3-10 2 84 7162 3.7 262 2.9 210
 PROJ 18979

#31 8/16 HIGH CPI LIST

PALMYRA TRI-STAR BURDETTE-ET

100419568
 PTA +2.88SCC +1.2PL +0.2DPR
 PTA +261M +6F +14P 99R
 PTA% -.02 +.03
 PTAT +1.80T 98R 8/16
 D/AV 19864M 3.9 778F 3.2 630P 8.5T

VAN-DE BENDIG'S NEVADA

100606780 2-05 78 93.37%
 DHI % FAT % PRT
 1-11 2 209 11140 4.3 478 3.1 347

GRANDDAM: VAN-DE BACKGARD NORMA RAE

100430947 5-09 85 86.75%
 GOLD % FAT % PRT
 1-10 2 305 16700 3.6 601 3.0 497
 308 16850 3.6 608 3.0 502
 2-09 2 305 18700 3.5 657 3.1 585
 311 18930 3.5 668 3.1 593
 3-10 2 305 18850 3.5 657 3.0 569
 8-00 2 305 16090 3.7 602 3.0 485
 321 16590 3.8 623 3.0 501
 9-00 2 305 17330 3.6 624 3.1 544
 LIFE 2519 142500 3.7 5227 3.1 4411

S&M-Ayr Farm

MIKE S. ZOOK
 300 POPLAR STREET
 HONEY BROOK, PA 19344
 (610) 273-7245

MAINSTREAM REAL BETHANY

EXCELLENT-93 2E



MAINSTREAM REAL BETHANY

PUREBRED AYRSHIRE 03/09/10 FEMALE
 100588190 5-10 93 2E P9 +455
 NM\$ +179 NATIONAL CLASS LEADER
 PTA +2.94SCC +1.3PL +0.2DPR
 PTA +415M +30F +2P 48R
 PTA\$ +179CY 8/16
 PTA%
 PTAT +.80T 45R 8/16
 PPA +1963M +189F +24P
 CLASS ST7 SR7 BD8 DF9 RA5 RW7 LS5 FA5
 FU6 UH8 UW9 UC6 UD4 TP5 TL6 LR8
 GOLD % FAT % PRT
 2-02 2 305 22900 5.0 1137 2.9 673
 335 24450 5.0 1229 3.0 723
 3-03 2 305 31990 4.7 1510 3.1 978
 365 37870 4.7 1777 3.1 1173
 4-05 2 305 38550 4.7 1822 2.8 1081
 365 43520 4.7 2063 2.8 1233
 5-07 2 305 40640 5.2 2124 2.6 1056
 LIFE 1420 149090 4.9 7300 2.9 4277

BETHANY'S DAUGHTER:

MAINSTREAM BUR BAILEY, EX-91
 1-10 365 34,050 3.8 1299 2.8 953

DAUGHTERS BY DANTE & ROUSH

BETHANY ALSO HAS 11-15 TWIN DANTE
 DAUGHTERS.

PALMYRA TRI-STAR REALITY

100369452
 PTA +3.00SCC +1.4PL +0.4DPR
 PTA +451M +25F +5P 96R
 PTA% +.04 -.05
 PTAT +.80T 94R 8/16
 D/AV 20696M 4.0 829F 3.1 638P 8.5T

BIRGHDALE COUNTESS 111

100546181 7-03 90
 GOLD % FAT % PRT
 2-00 2 305 24970 4.7 1180 3.2 794
 342 27280 4.9 1336 3.2 872
 3-01 2 305 25930 5.1 1314 3.3 867
 337 27240 5.0 1373 3.4 917
 4-01 2 305 27880 4.0 1107 3.2 879
 361 30600 4.0 1210 3.2 972
 5-07 2 305 31640 3.6 1130 3.0 941
 365 36250 3.6 1298 3.0 1088
 6-09 2 305 33060 3.2 1042 3.0 982
 365 36120 3.2 1157 3.0 1089
 LIFE 1795 158810 4.0 6427 3.1 4983

GRANDDAM: BIRGHDALE COUNTESS 64

8444789C VG-85
 4-03 2 359 20825 3.8 785 3.4 705
 5-05 2 294 19698 3.5 690 3.3 650
 6-05 2 330 22154 3.6 800 3.2 717
 7-07 2 330 21766 3.5 752 3.2 705

Mainstream Ayrshires

MARK KORTUS

2350 Main St.

Lynden WA 98264

(360-354-5266)

Email: mainstrm1@hotmail.com

MAINSTREAM RAMIUS BRANDI

EXCELLENT-94



MAINSTREAM RAMIUS BRANDI

PUREBRED AYRSHIRE 04/03/10 FEMALE
 100588202 5-09 94 P5 +389
 NM\$ -138 NATIONAL CLASS LEADER
 PTA +3.20SCC -2.5PL +0.3DPR
 PTA -427M -8F -8P 49R
 PTA\$ -138CY 8/16
 PTA%
 PTAT +.60T +.05 +.03 46R 8/16
 PPA -1290M +12F -21P
 CLASS ST9 SR9 BD9 DF8 RA5 RW8 LS5 FA5
 FU6 UH9 UW9 UC8 UD4 TP5 TL5 LR7
 GOLD % FAT % PRT
 2-00 2 305 21900 4.4 971 3.1 689
 365 25910 4.4 1137 3.2 830
 3-05 2 305 26550 4.9 1301 3.3 877
 365 29960 4.8 1445 3.4 1005
 4-07 2 305 34210 4.7 1616 3.1 1058
 334 36100 4.7 1685 3.1 1133
 5-09 2 193 22530 5.1 1148 2.9 641
 RIP

GALNEY-EPC GALANT RAMIUS

100216624
 PTA +3.54SCC +0.6PL +2.0DPR
 PTA -53M -5F +1P 96R
 PTA% -.02 +.01
 PTAT +1.10T 95R 8/16
 D/AV 19273M 3.9 746F 3.1 607P 8.5T

BIRGHDALE COUNTESS 115

100546172 3-03 78
 GOLD % FAT % PRT
 1-10 2 305 21890 4.5 975 3.3 714
 365 26030 4.5 1163 3.3 857
 3-02 2 292 20720 5.2 1072 3.4 695

GRANDDAM: BIRGHDALE COUNTESS 65

8444793C VG-85 CAN
 4-01 2 365 20095 4.7 952 3.6 723
 5-04 2 365 20203 4.8 977 3.7 743

BRANDI'S DAUGHTER:

MAINSTREAM BUR BEHEMI 2-04 85

2-00 2 305 22320 4.4 975 3.1 696
 318 23140 4.4 1007 3.1 724

Mainstream Ayrshires

MARK KORTUS

2350 Main St.

Lynden WA 98264

(360-354-5266)

Email: mainstrm1@hotmail.com

MOWRY PLUM-BOTTOM S PARIS-ET

EXCELLENT-90



MOWRY PLUM-BOTTOM S PARIS-ET

PUREBRED AYRSHIRE 06/01/12 FEMALE
 100650060 3-11 90 P- +352
 NM\$ -336
 PTA +3.04SCC -5.1PL -0.6DPR
 PTA -901M -19F -25P 43R
 PTA\$ -336CY 8/16
 PTA%
 PTAT +.60T +.09 +.02 51R 8/16
 PPA -1340M -15F -51P
 CLASS ST9 SR6 BD6 DF7 RA5 RW6 LS6 FA7
 FU7 UH8 UW7 UC8 UD8 TP5 TL5 LR7
 DHI % FAT % PRT
 2-07 2 305 11600 4.2 490 3.1 363
 320 12070 4.2 511 3.2 381
 3-07 PROJ 13393 4.5 609 3.0 408

YEARLING DAUGHTER (IN PHOTO):

PLUM-BOTTOM DREW PRECIOS

THIS IS A ROTATIONAL GRAZING HERD!

GRANDDAM: PLUM-BOTTOM PENELOPE O

981143 5-00 86
 DHIR % FAT % PRT
 2-00 2 305 12440 3.9 481 3.2 402
 340 13360 3.9 518 3.3 435
 3-00 2 305 10540 4.0 418 3.3 352
 312 10630 4.0 420 3.3 354
 4-05 2 305 15470 3.4 520 2.9 450
 365 16750 3.4 564 2.9 494
 5-09 2 244 12153 3.5 431 3.2 385

BONNIE BRAE SAKIC-ET

8370322C
 PTA +3.06SCC -4.2PL +2.0DPR
 PTA -1759M -51F -44P 85R
 PTA% +.11 +.07
 PTAT +.10T 76R 8/16
 D/AV 17549M 4.0 694F 3.2 562P

PLUM-BOTTOM TRIDENT'S PARIS

1016062 12-04 95 4E
 GOLD % FAT % PRT
 2-04 2 305 12400 4.1 504 3.2 400
 365 14540 4.1 594 3.2 468
 3-09 2 365 16500 4.1 684 3.2 534
 10-03 2 305 21010 3.8 794 3.1 653
 365 23750 3.8 905 3.1 742
 11-11 2 305 22220 4.1 900 2.8 628
 365 24780 4.1 1015 2.9 710
 8-09 2 305 21970 3.9 862 2.9 644
 LIFE 3059 156660 4.0 6245 3.1 4871

3RD AGED COW - 2002 MID-ATLANTIC NATL
 2ND AGED COW - 2003 MID-ATLANTIC NATL
 2ND AGED COW - 2003 CENTRAL NATIONAL
 RES ALL-AMERICAN AGED COW 2003
 2ND AGED COW - 2003 SOUTHERN NATL
 2ND AGED COW - 2005 MID-ATLANTIC NATL
 RES GRAND CHAMPION - 2005 MID-ATLANTIC NATL
 1ST AGED COW - 2005 CENTRAL NATL
 UNAN ALL-AMERICAN AGED COW - 2005
 2ND AGED COW - 2006 MID-ATLANTIC NATL
 3RD AGED COW - 2006 CENTRAL NATL
 HM ALL-AMERICAN AGED COW - 2006
 RES SENIOR CHAMPION - 2008 MID-ATLANTIC NATL
 RES GRAND CHAMPION - 2008 MID-ATLANTIC NATL
 NOM ALL-AMERICAN AGED COW - 2008

Plum-Bottom Farm

AUDREY GAY RODGERS

6364 SR 655, BELLEVILLE, PA 17004

(717) 667-3731

Email: hameau@embarqmail.com

PLUM-BOTTOM BURDETTE COCO

VERY GOOD-86



PLUM-BOTTOM BURDETTE COCO

PUREBRED AYRSHIRE 5/28/13 FEMALE
 100667121 2-11 86 P6 +431
 NM\$ +92
 PTA +2.85SCC +1.9PL -0.4DPR
 PTA -29M -2F +1P 46R
 PTA\$ +92CY 8/16
 PTA%
 PTAT +1.20T -0.01 +.01 39R 8/16
 PPA +140M -6F +3P
 CLASS ST7 SR7 BD6 DF6 RA7 RW6 LS6 FA6
 FU6 UH6 UW7 UC6 UD7 TP5 TL4 LR7
 2-05 14463 4.1 600 3.0 436P RIP

 THIS IS A ROTATIONAL GRAZING HERD!

PALMYRA TRI-STAR BURDETTE-ET

100419568
 PTA +2.88SCC +1.2PL +0.2DPR
 PTA +261M +6F +14P 99R
 PTA% -.02 +.03
 PTAT +1.80T 98R 8/16
 D/AV 19864M 3.9 778F 3.2 630P 8.5T

AGAWAM CAPTAIN CAITLYN

66782134 4-08 90
 DHI % FAT % PRT
 2-03 2 302 13550 4.1 550 3.2 427
 3-03 2 305 13970 3.9 541 3.2 446
 321 14360 3.9 559 3.2 461
 4-03 2 305 11660 3.9 459 3.2 376
 318 11820 4.0 467 3.2 383

GRANDDAM: JENNY'S GARTH SHIRLEY

100462632 8-03 90 2E
 GOLD % FAT % PRT
 2-03 2 305 13820 3.8 528 3.4 471
 365 16060 3.9 630 3.5 559
 3-06 2 305 15030 4.0 602 3.4 513
 362 16460 4.1 674 3.5 570
 4-07 2 305 15260 4.1 626 3.5 541
 315 15620 4.1 643 3.6 557
 5-07 2 305 14010 4.1 579 3.3 463
 308 14030 4.1 580 3.3 464
 7-07 2 261 15730 4.3 684 3.2 500

Plum-Bottom Farm

AUDREY GAY RODGERS

6364 SR 655, BELLEVILLE, PA 17004

(717) 667-3731

Email: hameau@embarqmail.com

CEDARCUT BURDETTE CLOVE COLATA

EXCELLENT-93



CEDARCUT BURDETTE CLOVE COLATA

PUREBRED AYRSHIRE 12/03/11 FEMALE
 100634136 4-10 93 P9 +493
 NM\$ +196
 PTA +2.90SCC +0.6PL -1.1DPR
 PTA +623M +16F +28P 46R
 PTA\$ +196CY 8/16
 PTA%
 PTAT +1.10T 57R 8/16
 PPA +5783M +224F +208P
 CLASS ST8 SR8 BD9 DF7 RA3 RW5 LS6 FA6
 FU9 UH7 UW8 UC7 UD7 TP7 TL3 LR5
 DHI % FAT % PRT
 2-07 2 299 21946 4.3 951 3.4 750
 3-06 308 33242 4.1 1376 3.3 1089
 4-06 PROJ 33477 3.5 1157 3.2 1081

HM ALL-AMERICAN WINTER CALF - 2012
 NOM JR ALL-AMERICAN WINTER CALF - 2012
 INTERMEDIATE CHAMP-2015 MID-ATLANTIC NATL JR
 GRAND CHAMPION-2015 MID-ATLANTIC NATIONAL JR
 INTERMEDIATE CHAMP-2015 MID-ATLANTIC NATL
 RES GRAND CHAMPION-2015 MID-ATLANTIC NATL
 TOTAL PERF WINNER-2015 MID-ATLANTIC NATL
 INTERMEDIATE CHAMPION - 2015 INTERNATIONAL
 GRAND CHAMPION - 2015 INTERNATIONAL
 INTERMEDIATE CHAMPION - 2015 CENTRAL NATL JR
 GRAND CHAMPION-2015 CENTRAL NATIONAL JR
 TOTAL PER WINNER-2015 CENTRAL NATL JR
 UNAN ALL-AMERICAN SR 3-YEAR-OLD - 2015
 UNAN JR ALL-AMERICAN SR 3-YEAR-OLD - 2015
 RES ALL WORLD 3-YEAR-OLD - 2015
 SENIOR CHAMPION - 2016 MID-ATLANTIC NAT'L JR
 GRAND CHAMPION - 2016 MID-ATLANTIC NAT'L JR
 SENIOR CHAMPION - 2016 MID-ATLANTIC NATIONAL
 GRAND CHAMPION - 2016 MID-ATLANTIC NATIONAL
 TOTAL PERF WINNER - 2016 MID-ATLANTIC NAT'L
 SENIOR CHAMPION - 2016 CENTRAL NATIONAL JR
 GRAND CHAMPION - 2016 CENTRAL NATIONAL JR
 TOTAL PERF WINNER - 2016 CENTRAL NATIONAL JR
 TOTAL PERF WINNER - 2016 INTERNATIONAL

PALMYRA TRI-STAR BURDETTE-ET

100419568
 PTA +2.88SCC +1.2PL +0.2DPR
 PTA +261M +6F +14P 99R
 PTA% -.02 +.03
 PTAT +1.80T 98R 8/16
 D/AV 19864M 3.9 778F 3.2 630P 8.5T

CEDARCUT AMBUSH CATO CLOVE

100492697 4-06 91
 DHI % FAT % PRT
 2-04 2 305 17030 3.3 568 3.0 509
 3-06 2 205 12560 3.8 471 3.0 373

GRANDDAM: CEDARCUT MP CARINA CATO

100063833 3-07 84
 DHI % FAT % PRT
 2-09 2 305 15670 2.9 459 3.1 479
 322 16160 2.9 475 3.1 497
 3-09 2 305 20710 2.6 538 3.0 622
 5-01 2 305 19050 3.4 641 2.9 549
 359 20100 3.4 680 2.9 588
 6-07 2 286 16940 3.7 624 2.9 484

Cedarcut Farm
 THE CURTIS FAMILY

3552 EAST ROAD, CAZENOVIA, NY 13035
 (315)-655-8909

Joan Curtis jcurtis29@gmail.com • Diana Curtis dcurtis26@gmail.com

HI-AYR-VIEW BURDETTE ANDIE-ET

EXCELLENT-93



HI-AYR-VIEW BURDETTE ANDIE-ET

PUREBRED AYRSHIRE 07/24/11 FEMALE
 100621097 5-03 93 P8 +440
 NM\$ +56
 PTA +2.98SCC +1.0PL +0.2DPR
 PTA -5M -3F +2P 49R
 PTA\$ +56CY 8/16
 PTA%
 PTAT +1.50T - .02 +.01 60R 8/16
 PPA +506M +34F +34P
 CLASS ST9 SR8 BD8 DF7 RA5 RW9 LS4 FA5
 FU8 UH9 UW9 UC8 UD7 TP5 TL4 LR8
 GOLD % FAT % PRT
 1-10 2 291 14430 4.1 597 3.3 481
 2-10 2 260 17940 4.2 749 3.3 599
 3-09 2 305 22090 3.7 809 3.2 713
 349 23190 3.7 867 3.3 755

 1ST 4-YEAR-OLD - 2015 SOUTHERN NATL
 SENIOR CHAMPION - 2015 SOUTHERN NATL
 GRAND CHAMPION - 2015 SOUTHERN NATL
 NOM ALL-AMERICAN 4-YEAR-OLD - 2015

PALMYRA TRI-STAR BURDETTE-ET

100419568
 PTA +2.88SCC +1.2PL +0.2DPR
 PTA +261M +6F +14P 99R
 PTA% -.02 +.03
 PTAT +1.80T 98R 8/16
 D/AV 19864M 3.9 778F 3.2 630P 8.5T

DALTONDALE AUDRA

100356984 9-03 92 4E
 GOLD % FAT % PRT
 2-02 2 305 18830 3.7 706 3.0 561
 3-07 2 274 14000 3.8 537 3.1 428
 4-06 2 260 16080 3.5 570 2.9 468
 5-05 2 284 18700 3.8 717 2.9 546
 6-07 2 271 15410 3.3 510 2.8 435
 7-08 2 305 19640 3.6 698 3.1 611
 9-01 2 260 10930 3.1 343 2.8 311
 LIFE 2174 120020 3.6 4297 3.0 3582

GRANDDAM:

DALTONDALE P. AUDREY-ET

100246719 4-11 86
 DHI % FAT % PRT
 2-04 2 305 16610 4.1 685 2.8 472
 320 16990 4.1 704 2.9 488
 3-04 2 305 21110 4.0 843 2.9 611
 4-07 2 305 19590 4.4 853 2.8 556
 337 20740 4.4 904 2.9 599
 5-08 2 305 17150 3.3 563 2.8 485
 7-03 2 288 14720 4.0 587 2.6 390

Hi-Ayr View

BRIAN & KRISTI DINDERMAN, ALAINA, AMERY & AIDAN

LISA & JORDAN OELLERICH

3307 W ORANGEVILLE ROAD

ORANGEVILLE, IL

Brian (815) 297-4111 • Kristi (815) 821-2066

hiayrview@hotmail.com

HALL'S STARMAN IVETTE

VERY GOOD-88



HALL'S STARMAN IVETTE

PUREBRED AYRSHIRE 03/29/13 FEMALE
72872668

2-05 88 P- +357

NM\$	-64							
PTA	+2.86SCC	+0.7PL	+3.3DPR					
PTA	-616M	-22F	-21P	46R				
PTA\$	-64CY				8/16			
PTA%		+0.1	-.01					
PTAT	+1.10T		50R	8/16				
PPA	+3317M	+103F	+94P					
CLASS	ST5 SR5 BD6 DF6 RA3 RW5 LS5 FA7							
	FU8 UH9 UW6 UC5 UD6 TP4 TL4 LR7							
GOLD			%	FAT	%	PRT		
2-05	2 305	33850	3.5	1173	2.9	974		
	365	38270	3.5	1350	3.0	1139		

2ND JR 2-YEAR-OLD -2015 SOUTHERN NATIONAL

OAK-RIDGE STAR MAN

135196

PTA	+2.88SCC	-0.3PL	+5.6DPR					
PTA	-1654M	-63F	-64P	98R				
PTA%		+0.1	-.07					
PTAT	-.80T		97R	8/16				
D/AV	13817M	3.8	531F	3.1	430P	7.8T		

MAPLEBURN GARTH IVONNA-ET

100303481 5-01 91

GOLD			%	FAT	%	PRT
2-10	2	305	20620	3.8	793	3.3 686
4-07	2	305	31080	3.8	1179	3.0 945
5-08	2	305	16790	3.9	648	3.8 631
7-08	2	342	22060	3.8	843	3.3 736
9-00	2	305	18350	4.0	731	3.1 569
10-06	2	334	23240	4.1	954	3.2 742
LIFE	2310	148040	4.0	5920	3.4	4997

3RD FALL CALF - 2003 CENTRAL NATL
1ST FALL CALF - 2003 SOUTHERN NATL
ALL-AMERICAN FALL CALF - 2003
3RD FALL YEARLING - 2004 CENTRAL NATL JR
1ST FALL YEARLING - 2004 CENTRAL NATL
1ST FALL YEARLING - 2004 SOUTHERN NATL
1ST FALL YEARLING - 2004 SOUTHERN NATL JR
RES JR CHAMPION - 2004 SOUTHERN NATL JR
NOM ALL-AMERICAN FALL YEARLING - 2004
JR ALL-AMERICAN FALL YEARLING - 2004
3RD 4-YEAR-OLD - 2007 SOUTHERN NATL JR

GRANDDAM: ALDERBERRY-LANE MELISSA

748731C VG-85 CAN

LIFE 154571 4.3 6700 3.4 5296

Hall's Ayrshires

GENE HALL JR & PATRICK MYERS & FAMILY

346494 E. 760 Rd.

Cushing OK 74023

Gene: (405) 740-3085 • ghall2088@gmail.com

HALL'S ROSS REVA

EXCELLENT-90



HALL'S ROSS REVA

97.98% AYRSHIRE 07/01/13 FEMALE
 73323457 2-11 90 P9 +488
 NM\$ +152
 PTA +0F +0P 0R
 PTA\$ +152CY 8/16
 PTAT +1.20T 51R 8/16
 GOLD % FAT % PRT
 1-09 2 233 16100 3.6 572 3.0 476

3RD JR 2-YEAR-OLD - 2015 CENTRAL NATL JR
 HM JR ALL-AMERICAN JR 2-YEAR-OLD - 2015

GRANDDAM:

BLIND BUCK VALL SOL REDPEPPER

100428210 5-09 94 2E
 DHI % FAT % PRT
 2-09 2 308 19370 4.2 806 3.4 656
 3-09 2 315 19800 4.3 843 3.4 673
 5-08 2 323 29360 4.0 1186 3.1 897

HM JR ALL-AMERICAN FALL CALF - 2006
 NOM JR ALL-AMERICAN FALL YEARLING - 2007
 GRAND CHAMPION-2008 EASTERN STATES NAT'L JR
 SENIOR CHAMPION - 2008 CENTRAL NATIONAL JR
 INTERMEDIATE CHAMPION - 2008 CENTRAL NATL
 GRAND CHAMPION - 2008 CENTRAL NATIONAL JR
 ALL-AMERICAN SR 2-YEAR-OLD - 2008
 JR ALL-AMERICAN SR 2-YEAR-OLD - 2008
 INTERMEDIATE CHAMPION - 2009 INTERNATIONAL
 SENIOR CHAMPION - 2009 INTERNATIONAL JR
 GRAND CHAMPION - 2009 INTERNATIONAL JR
 GRAND CHAMPION - 2009 INTERNATIONAL
 UNAN ALL-AMERICAN SR 3-YEAR-OLD - 2009
 UNAN JR ALL-AMERICAN SR 3-YEAR-OLD - 2009
 RES ALL-AMERICAN 5-YEAR-OLD - 2011

HALL'S TRAVELER ROSS

69154814
 PTA -339M -6F +3P 54R
 PTA% +.04 +.08
 PTAT +.70T 59R 8/16
 D/AV 19804M 4.0 791F 3.4 665P 8.5T

BLIND BUCK VALL O RUSTY-ET

100609112 4-01-90 95.97%
 GOLD % FAT % PRT
 2-06 2 305 26640 3.7 976 3.4 904
 361 29840 3.6 1086 3.4 1000
 3-09 2 305 31650 4.2 1338 3.2 1025
 365 37250 4.1 1516 3.2 1186

3RD SR 2-YEAR-OLD - 2013 CENTRAL NATL JR
 NOM JR ALL-AMERICAN SR 2-YEAR-OLD - 2013

Hall's Ayrshires

GENE HALL JR & PATRICK MYERS & FAMILY

346494 E. 760 Rd.

Cushing OK 74023

Gene: (405) 740-3085 • ghall2088@gmail.com

MUELLERS M LEGUE CAYLEE

EXCELLENT-92 2E



MUELLERS M LEGUE CAYLEE

PUREBRED AYRSHIRE 09/13/08 FEMALE
 100572003 6-04 92 2E P- +390
 NM\$ -47
 PTA +3.13SCC +1.2PFL -0.5DPR
 PTA -337M -18F -9P 52R
 PTA\$ -47CY 8/16
 PTA%
 PTAT +.80T 58R 8/16
 PPA +384M -22F +19P
 CLASS ST8 SR8 BD7 DF7 RA4 RW8 LS6 FA8
 FU8 UH7 UW7 UC5 UD6 TP7 TL4 LR7
 GOLD % FAT % PRT
 2-07 2 305 13080 3.1 408 2.9 379
 365 14470 3.4 486 3.0 439
 4-00 2 305 24070 3.2 772 3.1 740
 5-09 2 305 23280 3.7 864 3.3 768
 365 26250 3.7 980 3.3 875
 7-00 2 305 32720 3.3 1077 3.0 970
 365 37740 3.4 1281 3.0 1125
 LIFE 1627 114160 3.5 3957 3.2 3623

1ST SR 3-YEAR-OLD - 2012 SOUTHERN NATL JR
 RES INTERMEDIATE CHAMP-2012 SOUTHERN NATL JR
 1ST SR 3-YEAR-OLD - 2012 SOUTHERN NATIONAL
 INTERMEDIATE CHAMPION - 2012 SOUTHERN NATL
 GRAND CHAMPION - 2012 SOUTHERN NATL
 HM ALL-AMERICAN SR 3-YEAR-OLD - 2012
 RES JR ALL-AMERICAN SR 3-YEAR-OLD - 2012
 2ND AGED COW - 2015 SOUTHERN NATL JR
 2ND AGED COW - 2015 SOUTHERN NATL
 NOM JR ALL-AMERICAN AGED COW - 2015

NEW VISION W. MAJOR LEGUE

145548
 PTA +3.28SCC -1.4PFL -2.7DPR
 PTA +519M -4F +8P 93R
 PTA% -.13 -.05
 PTAT +.10T 89R 8/16
 D/AV 19009M 3.8 713F 3.1 586P 8.4T

MUELLERS HARMONY CLARETA

100349766 6-01 90 2E
 GOLD % FAT % PRT
 2-03 2 305 9410 5.0 470 3.4 316
 3-06 2 296 10270 5.0 517 3.5 361
 4-06 2 291 8790 5.7 502 3.7 321
 5-07 2 284 9490 5.0 478 3.6 337
 6-06 2 305 9500 4.7 446 3.3 318
 330 9970 4.7 466 3.3 333
 8-00 2 305 8320 4.5 373 3.4 284
 341 9020 4.8 432 3.5 314
 9-05 2 305 12270 4.8 584 3.6 437
 351 13720 4.8 663 3.5 483

GRANDDAM: MUELLERS TORNADO COURTNEY

1015201 5-05 91
 GOLD % FAT % PRT
 2-03 2 310 12930 4.7 611 3.6 466
 3-02 2 327 16500 4.3 706 3.7 610
 5-03 2 320 15950 4.7 748 3.5 564
 6-08 2 315 18350 4.1 760 3.4 617
 7-08 2 270 12260 4.1 503 3.3 404
 8-08 2 222 9350 3.6 335 3.1 292

Hall's Ayrshires

GENE HALL JR & PATRICK MYERS & FAMILY

346494 E. 760 Rd.
 Cushing OK 74023

Gene: (405) 740-3085 • ghall2088@gmail.com

HALL'S POTTER TRI-OPAL

EXCELLENT-91 2E



HALL'S POTTER TRI-OPAL

PUREBRED AYRSHIRE 11/03/10 FEMALE
 100642681 5-07 91 2E P- +403
 NM\$ -47
 PTA +2.98SCC -2.2PPL -1.4DPR
 PTA -325M +8F -2P 51R
 PTA\$ -47CY 8/16
 PTA%
 PTAT +.30T +.12 +.05 60R 8/16
 PPA +697M +78F +49P
 CLASS ST7 SR4 BD5 DF8 RA5 RW6 LS7 FA4
 FU6 UH8 UW7 UC9 UD7 TP6 TL6 LR7
 GOLD % FAT % PRT
 1-09 2 268 8520 4.6 396 4.4 372
 2-09 2 302 21550 4.8 1043 3.4 727
 3-10 2 305 22260 3.9 860 3.0 672
 313 22650 3.8 871 3.0 685
 4-10 2 305 20240 4.0 803 3.6 721
 365 23820 4.0 952 3.6 851

 2ND FALL YRLG IN MILK-2012 CENTRAL NAT'L JR
 RES JR ALL-AMERICAN FALL YRLG IN MILK - 2012
 2ND SR 2-YEAR-OLD - 2013 SOUTHERN NATL JR
 1ST SR 2-YEAR-OLD - 2013 SOUTHERN NATL
 NOM JR ALL-AMERICAN SR 2-YEAR-OLD - 2013
 2ND SR 3-YEAR-OLD - 2014 SOUTHERN NATL JR
 2ND SR 3-YEAR-OLD - 2014 SOUTHERN NATL
 NOM ALL-AMERICAN SR 3-YEAR-OLD - 2014
 NOM JR ALL-AMERICAN SR 3-YEAR-OLD - 2014
 1ST 4-YEAR-OLD - 2015 SOUTHERN NATL JR
 3RD 4-YEAR-OLD - 2015 SOUTHERN NATL
 NOM JR ALL-AMERICAN 4-YEAR-OLD - 2015

DES PRAIRIES POTTER

100512296C
 PTA +2.80SCC -0.3PL -1.4DPR
 PTA -277M +15F -5P 94R
 PTA% +.14 +.02
 PTAT +.10T 90R 8/16
 D/AV 19279M 4.1 786F 3.2 612P 8.5T

TERRACE BANK OLIVE TRIDENT

100207413 9-05 91
 GOLD % FAT % PRT
 6-08 2 305 12560 3.0 382 3.0 380
 9-04 2 305 10650 3.3 347 3.2 340

GRANDDAM: TERRACE BANK OLIVE

820621C VG-87 CAN
 6-06 2 354 24978 3.4 838 3.0 761
 LIFETIME 136832 3.6 4969 3.1 4314

Hall's Ayrshires

GENE HALL JR & PATRICK MYERS & FAMILY

346494 E. 760 Rd.

Cushing OK 74023

Gene: (405) 740-3085 • ghall2088@gmail.com

VAN-DE BRDT HOPSCOTCH PINOCHLE

VERY GOOD-87



VAN-DE BRDT HOPSCOTCH PINOCHLE

97.21% AYRSHIRE 10/29/13 FEMALE
 67195267 2-00 87 P9 +498
 NM\$ +238
 PTA +2.90SCC +1.7PL +0.4DPR
 PTA +480M +20F +22P 47R
 PTA\$ +238CY 8/16
 PTA%
 PTAT +1.60T +.01 +.04
 48R 8/16

CLASS ST6 SR7 BD7 DF8 RA5 RW4 LS5 FA7
 FU8 UH8 UW7 UC7 UD8 TP7 TL3 LR7
 1-09 365 20439 4.6 935 3.3 671

 1ST FALL YEARLING IN MILK-2015 INTERNATIONAL
 1ST FALL YEARLING IN MILK-2015 SOUTHERN
 NAT'L JR
 ALL-AMERICAN FALL YEARLING IN MILK - 2015
 JR ALL-AMERICAN FALL YEARLING IN MILK - 2015

PALMYRA TRI-STAR BURDETTE-ET

100419568
 PTA +2.88SCC +1.2PL +0.2DPR
 PTA +261M +6F +14P 99R
 PTA% -.02 +.03
 PTAT +1.80T 98R 8/16
 D/AV 19864M 3.9 778F 3.2 630P 8.5T

VAN-DE POKER CRICKET HOPSCOTCH

67541118 5-06 87 94.43%
 GOLD % FAT % PRT
 4-11 2 305 18400 4.1 746 3.3 600
 361 20760 4.0 840 3.3 688
 DHI
 1-10 2 305 17120 3.8 647 3.5 596
 318 17680 3.8 670 3.5 616
 2-10 2 305 20130 4.3 871 3.4 682
 311 20440 4.3 885 3.4 694
 3-11 2 332 23710 4.7 1110 3.4 797
 4-11 2 307 18470 4.1 749 3.3 603

GRANDDAM: VAN-DE JERRY K-T-DID CRICKET

100430983 7-01 92 3E 88.87%
 DHI % FAT % PRT
 1-09 2 305 19630 3.7 726 3.2 627
 365 23330 3.8 881 3.2 755
 3-02 2 305 21650 4.1 891 3.3 713
 326 22710 4.2 943 3.3 753
 4-02 2 305 22350 3.9 875 3.4 764
 311 22660 3.9 889 3.4 775
 5-02 2 341 28640 4.1 1176 3.4 984
 6-03 2 305 24520 3.7 905 3.5 848
 LIFE 1943 134520 4.0 5372 3.4 4582

Lee's Dixieland

LYNN LEE

PO BOX 1229

SMYRNA, TN 37167

(615) 390-6312 • lee_lynn@bellsouth.net

DUNCAN POKER MADEA EXCELLENT-91



DUNCAN POKER MADEA

PUREBRED AYRSHIRE 09/03/10 FEMALE
 100602496 4-01 91 P9 +396
 NM\$ -81
 PTA +2.92SCC -2.2PL -0.8DPR
 PTA -347M -1F -1P 44R
 PTA\$ -81CY 8/16
 PTA% +.07 +.05
 PTAT +.10T 35R 8/16
 PPA -165M -8F +27P
 CLASS ST8 SR8 BD8 DF7 RA4 RW7 LS8 FA3
 FU7 UH7 UW9 UC6 UD4 TP8 TL2 LR7

 2ND FALL CALF - 2011 SOUTHERN NATL
 3RD FALL YEARLING - 2012 CENTRAL NATL JR
 1ST SR 2-YEAR-OLD - 2013 SOUTHERN NATL JR
 2ND SR 2-YEAR-OLD - 2013 SOUTHERN NATL
 HM JR ALL-AMERICAN SR 2-YEAR-OLD - 2013
 2ND SR 3-YEAR-OLD - 2014 CENTRAL NATL JR
 RES JR ALL-AMERICAN SR 3-YEAR-OLD - 2014

DAUGHTER:

DUNCAN DOUBLEWHAMMY MARGARITA
 1ST SPRING YEARLING & JR CHAMPION - 2016
 OHIO STATE FAIR OPEN & JR SHOWS
 1ST SPRING YEARLING & JR CHAMPION - 2016
 SOUTHERN NATIONAL SHOW

DES CHAMOIS POKER-ET

8401621C
 PTA +2.83SCC +0.9PL -1.9DPR
 PTA +28M +15F +0P 98R
 PTA% +.07
 PTAT +.40T 97R 8/16
 D/AV 19334M 4.0 767F 3.1 608P 8.5T

DUNCAN SAKIC MADELINE

100471478 2-11 83
 GOLD % FAT % PRT
 2-05 2 305 26250 5.5 1446 3.3 875
 365 31670 5.4 1706 3.4 1069

GRANDDAM: AYRDELL'S MANDATE MANDI

100250167 4-09 86
 GOLD % FAT % PRT
 2-08 2 262 12570 4.1 512 3.1 389
 3-08 2 265 24230 4.5 1101 3.0 723
 4-08 2 305 25020 4.4 1090 3.1 784
 365 29170 4.4 1279 3.1 918
 6-02 2 305 27650 5.3 1453 3.0 819
 310 27990 5.2 1468 3.0 829

Duncan Farms
DARYL DUNCAN & FAMILY
 42527 US 36
 WARSAW, OH 43844
 (740) 824-4592

PALMYRA BERKELY P RUTH-ET

VERY GOOD-88



PALMYRA BERKELY P RUTH-ET

PUREBRED AYRSHIRE 09/15/13 FEMALE
 72394521 2-07 88 P9 +507
 NM\$ +253
 PTA +3.10SCC +3.0PL -0.1DPR
 PTA +300M +24F +11P 55R
 PTA\$ +253CY 8/16
 PTA%
 PTAT +1.50T +.07 +.01 56R 8/16
 PPA +906M +88F +21P
 CLASS ST7 SR4 BD6 DF6 RA4 RW8 LS5 FA7
 FU8 UH7 UW6 UC7 UD7 TP4 TL5 LR7
 DHI % FAT % PRT
 2-00 2 PROJ 27400 4.6 1264 3.0 824

 3RD FALL CALF - 2014 MID-ATLANTIC NATIONAL
 NOM ALL-AMERICAN FALL CALF - 2014
 2ND FALL YEARLING - 2015 MID-ATLANTIC NATL
 NOM ALL-AMERICAN FALL YEARLING (TIE) - 2015
 1ST SR 2-YEAR-OLD - 2016 INTERNATIONAL
 INTERMEDIATE CHAMPION - 2016 INTERNATIONAL

RANKED #87 ON 8/16 HIGH CPI LIST

FULL SISTER TO REAGAN 7AY111 AND
 MATERNAL SISTER TO ROUSH 7AY107 AT
 SELECT SIRES.

PALMYRA BENDIG BERKELY-ET

69261805
 PTA +3.06SCC +1.2PL +0.1DPR
 PTA -31M -2F -9P 91R
 PTA% -04
 PTAT +1.00T 82R 8/16
 D/AV 19790M 4.0 785F 3.1 616P 8.4T

PALMYRA POKER LH ROSY-ET

66596106 4-01 92 ELITE
 GOLD % FAT % PRT
 2-00 2 298 19900 4.5 896 3.3 654
 3-00 2 305 22420 4.5 1012 3.5 789
 365 26100 4.4 1161 3.5 910

 NOM ALL-AMERICAN JR 2-YEAR-OLD - 2011
 1ST JR 3-YEAR-OLD - 2012 MID-ATLANTIC NATL
 NOM ALL-AMERICAN JR 3-YEAR-OLD - 2012
 1ST 4-YEAR-OLD - 2013 MID-ATLANTIC NATL
 2ND 4-YEAR-OLD - 2013 INTERNATIONAL
 RES ALL-AMERICAN 4-YEAR-OLD - 2013

MATERNAL SISTER TO REALITY 200AY00950

GRANDDAM: GALNEY-EPC LH. ROSY-ET

100110610 3-09 90
 GOLD % FAT % PRT
 2-00 2 365 25010 3.7 920 3.0 745
 3-03 2 305 26350 3.9 1018 3.1 817
 3-03 2 365 30679 3.9 1210 3.2 969
 4-06 2 365 32980 3.8 1238 3.1 1014
 5-08 2 305 24470 3.9 961 3.1 755
 5-08 2 365 29185 3.9 1125 3.1 918
 LIFE 1684 126800 3.8 4806 3.1 3970



18811 Wagaman Rd.
 Hagerstown, MD 21740
 Phone: (301) 739-2729
 Fax: (301) 733-9255
 palmyraayrshires@aol.com
 www.palmyrafarm.net

PALMYRA BURDETTE P RAYNA-ET

VERY GOOD-88



PALMYRA BURDETTE P RAYNA-ET

PUREBRED AYRSHIRE 07/24/13 FEMALE
 72394511 2-03 88 P9 +514
 NM\$ +296
 PTA +2.98SCC +3.1PL -0.1DPR
 PTA +378M +26F +19P 50R
 PTA\$ +296CY 8/16
 PTA%
 PTAT +2.00T +.06 +.04 53R 8/16
 PPA +1619M +94F +62P
 CLASS ST7 SR7 BD7 DF8 RA5 RW5 LS5 FA7
 FU8 UH8 UW7 UC7 UD8 TP6 TL4 LR8
 DHI % FAT % PRT
 1-11 2 305 20480 4.4 895 3.3 677
 365 23360 4.4 1026 3.3 779

 2ND JR 2-YEAR-OLD-2015 MID-ATLANTIC NATIONAL
 NOM ALL-AMERICAN JR 2-YEAR-OLD - 2015

MATERNAL SISTER TO ROUSH 7AY2017 AND
 REAGAN 7AY111 AT SELECT SIRE

#18 - 8-16 HIGH CPI LIST

PALMYRA TRI-STAR BURDETTE-ET

100419568
 PTA +2.88SCC +1.2PL +0.2DPR
 PTA +261M +6F +14P 99R
 PTA% -.02 +.03
 PTAT +1.80T 98R 8/16
 D/AV 19864M 3.9 778F 3.2 630P 8.5T

PALMYRA POKER LH ROSY-ET

66596106 4-01 92 ELITE
 GOLD % FAT % PRT
 2-00 2 298 19900 4.5 896 3.3 654
 3-00 2 365 26100 4.4 1161 3.5 910

 NOM ALL-AMERICAN JR 2-YEAR-OLD - 2011
 1ST JR 3-YEAR-OLD-2012 MID-ATLANTIC NATIONAL
 NOM ALL-AMERICAN JR 3-YEAR-OLD - 2012
 1ST 4-YEAR-OLD - 2013 MID-ATLANTIC NATIONAL
 2ND 4-YEAR-OLD - 2013 INTERNATIONAL
 RES ALL-AMERICAN 4-YEAR-OLD - 2013

MATERNAL SISTER TO REALITY 200AY00950

GRANDDAM: GALNEY-EPC LH. ROSY-ET

100110610 3-09 90
 GOLD % FAT % PRT
 2-00 2 365 25010 3.7 920 3.0 745
 3-03 2 305 26350 3.9 1018 3.1 817
 3-03 2 365 30679 3.9 1210 3.2 969
 4-06 2 365 32980 3.8 1238 3.1 1014
 5-08 2 365 29185 3.9 1125 3.1 918
 LIFE 1684 126800 3.8 4806 3.1 3970

 2ND SR 2-YEAR-OLD-2002 MID-ATLANTIC NATL
 1ST SR 2-YEAR-OLD-2002 MID-ATLANTIC NATL JR
 2ND SR 2-YEAR-OLD - 2002 CENRAL NATIONAL JR
 NOM JR ALL-AMERICAN SR 2-YEAR-OLD - 2002



18811 Wagaman Rd.
 Hagerstown, MD 21740
 Phone: (301) 739-2729
 Fax: (301) 733-9255
 palmyraayrshires@aol.com
 www.palmyrafarm.net

PALMYRA NAPIER R BLOOM

EXCELLENT-91



PALMYRA NAPIER R BLOOM

PUREBRED AYRSHIRE 09/03/12 FEMALE
 71350656 3-08 91 P7 +436
 NM\$ +125
 PTA +3.06SCC +1.1PL +1.5DPR
 PTA +127M +4F +8P 38R
 PTA\$ +125CY 8/16
 PTA%
 PTAT +.50T -.01 +.02 48R 8/16
 PPA +1346M +67F +57P
 CLASS ST6 SR5 BD6 DF7 RA5 RW8 LS4 FA6
 FU6 UH6 UW8 UC7 UD5 TP7 TL3 LR7
 GOLD % FAT % PRT
 2-03 2 295 18500 4.4 811 3.2 595
 3-03 305 25770 3.9 1016 3.3 860

2ND SR 2-YEAR-OLD - 2015 MID-ATLANTIC
 NATIONAL

ARDMORE CROWN NAPIER

03000006180947C

PALMYRA RAMIUS R BLOOM-ET

66596054 2-09 83
 GOLD % FAT % PRT
 2-00 2 305 16190 4.1 657 3.1 501
 365 18790 4.1 762 3.2 598

GRANDDAM: PALMYRA RIPKEN'S L. BLUSH

100279870

5-08 90
 GOLD % FAT % PRT
 2-04 2 305 25950 3.8 990 3.2 829
 365 30850 3.9 1208 3.3 1005
 3-08 2 365 32540 3.3 1081 3.2 1042
 5-01 2 365 36060 4.1 1491 3.2 1147
 LIFE 1613 126280 3.8 4850 3.3 4130

1ST SR 2-YEAR-OLD - 2005 MID-ATLANTIC NATL
 1ST SR 2-YEAR-OLD - 2005 CENTRAL NATL
 ALL-AMERICAN SR 2-YEAR-OLD - 2005



18811 Wagaman Rd.
 Hagerstown, MD 21740
 Phone: (301) 739-2729
 Fax: (301) 733-9255
 palmyraayrshires@aol.com
 www.palmyrafarm.net

PALMYRA RAVEN J BETHANY-ET

EXCELLENT-91



PALMYRA RAVEN J BETHANY-ET

PUREBRED AYRSHIRE 01/13/09 FEMALE
 66596064 4-09 91 ELITE P9 +515
 NM\$ +319
 PTA +2.94SCC +2.0PL -0.7DPR
 PTA +1231M +44F +28P 59R
 PTA\$ +319CY 8/16
 PTA%
 PTAT +1.20T 65R 8/16
 PPA +5454M +236F +121P

CLASS	ST6	SR6	BD8	DF7	RA5	RW8	LS5	FA5
	FU5	UH7	UW8	UC8	UD5	TP5	TL3	LR8
GOLD				%	FAT	%	PRT	
2-04	2	305	17590	4.2	730	3.0	524	
		365	20680	4.1	851	3.0	624	
3-07	2	305	27590	4.4	1205	3.0	839	
		365	32350	4.3	1393	3.1	988	
5-00	2	305	31100	4.6	1433	2.8	878	
		365	36620	4.5	1643	2.9	1058	
6-06	2	305	31560	4.1	1308	2.9	913	
		365	37332	4.1	1518	2.9	1088	
LIFE	1681	146290	4.2	6204	3.0	4416		

#17 8-16 HIGH CPI LIST

FULL SISTER TO BENEVOLA 76AY00754

3rd DAM: PALMYRA C BLUSH - VG 85

LIFE 1995 144068 4.2 6040 3.4 4934

GALNEY-EPC RIPKEN RAVEN

100203204
 PTA +3.29SCC -1.8PL -1.6DPR
 PTA +1024M +8F +18P 96R
 PTA% -0.16 -0.07
 PTAT +1.00T 90R 8/16
 D/AV 20715M 3.7 764F 3.1 635P 8.4T

PALMYRA JERRY BETHANY-ET

100323122 3-05 90 ELITE
 GOLD % FAT % PRT
 2-00 2 365 27538 4.0 1094 3.4 924
 3-05 2 365 36090 4.2 1510 3.3 1194

2ND JR 3-YEAR-OLD - 2006 CENTRAL NATIONAL JR
 JR ALL-AMERICAN JR 3-YEAR-OLD - 2006
 3RD 4-YEAR-OLD - 2007 MID-ATLANTIC NATL JR

GRANDDAM: PALMYRA RENO BETHANY-ET

100101191 3-06 90
 GOLD % FAT % PRT
 1-11 2 365 26925 3.9 1038 3.1 847
 3-01 2 365 30930 3.6 1104 3.3 1006
 4-08 2 305 31920 3.9 1233 3.1 982
 365 35780 3.8 1374 3.1 1123
 LIFE 1551 120700 3.7 4496 3.2 3855

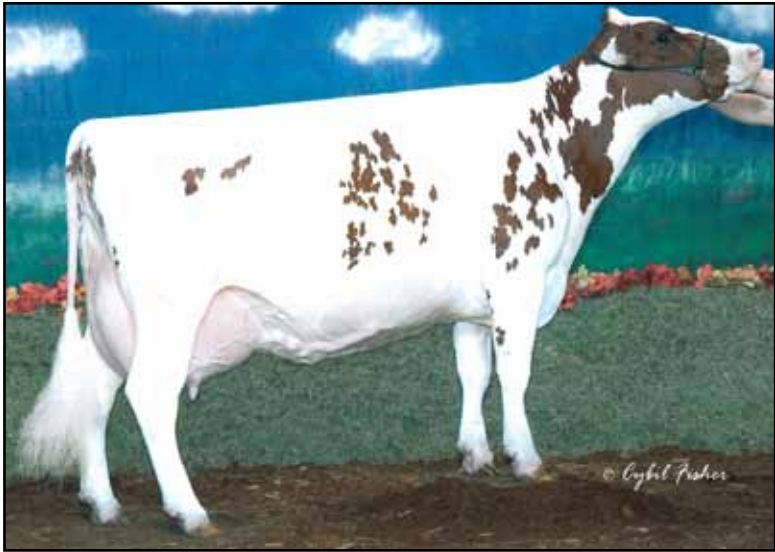
2ND JR 2-YEAR-OLD - 2001 SOUTHERN NATIONAL
 2ND JR 2-YEAR-OLD - 2001 SOUTHERN NATIONAL JR
 HM ALL-AMERICAN JR 2-YEAR-OLD - 2001
 JR ALL-AMERICAN JR 2-YEAR-OLD - 2001
 2ND JR 3-YEAR-OLD - 2002 SOUTHERN NATIONAL
 3RD JR 3-YEAR-OLD - 2002 SOUTHERN NATIONAL JR



18811 Wagaman Rd.
 Hagerstown, MD 21740
 Phone: (301) 739-2729
 Fax: (301) 733-9255
 palmyraayrshires@aol.com
 www.palmyrafarm.net

VALEVE BBK MINERVA

EXCELLENT-96 2E



VALEVE BBK MINERVA

PUREBRED AYRSHIRE 06/08/02 FEMALE
 100292194 6-06 96 2E P- +385
 NM\$ -178
 PTA +3.01SCC -2.3PL -1.9DPR
 PTA -495M -20F -7P 66R
 PTA\$ -178CY 8/16
 PTA%
 PTAT +.80T 59R 8/16
 GOLD
 9-04 2 288 22080 4.2 FAT % PRT
 921 3.4 744
 DHI
 1-11 2 305 20209 4.1 834 3.5 707
 345 22874 4.1 943 3.5 801
 3-01 2 319 30926 5.5 1699 3.3 1019
 3-01 2 305 30029 5.5 1644 3.3 984
 4-01 2 305 31187 4.8 1505 3.4 1048
 365 35301 4.7 1653 3.4 1191
 5-09 2 305 34142 5.9 2003 3.1 1059
 365 38236 5.7 2162 3.2 1216
 LIFE 2478 219766 5.0 10924 3.3 7296

ALL-AMERICAN SUMMER YEARLING - 2003
 UNAN ALL-AMERICAN JR 2-YEAR-OLD - 2004
 GRAND CHAMPION - 2005 CENTRAL NATIONAL
 ALL-AMERICAN JR 3-YEAR-OLD - 2005
 GRAND CHAMPION - 2006 CENTRAL NATIONAL
 UNAN ALL-AMERICAN 4-YEAR-OLD - 2006
 HM ALL-AMERICAN 5-YEAR-OLD - 2007
 GRAND CHAMPION - 2008 CENTRAL NATIONAL
 ALL-AMERICAN AGED COW - 2008
 NOM ALL-AMERICAN AGED COW - 2009

STILL ON IVF FLUSH PROGRAM.
 INQUIRES WELCOME

BLACKADDAR B B KELLOGG

777850C
 PTA +3.13SCC -0.3PL -0.3DPR
 PTA -936M -44F -21P 98R
 PTA% -.04 +.05
 PTAT +1.00T 97R 8/16
 D/AV 17810M 3.9 688F 3.2 569P

YELLOW BRIAR PATRICKS MINT

10021216C VG-85 CAN
 2-05 2 305 16031 3.8 606 3.2 507
 3-04 2 305 16369 4.4 712 2.8 461
 4-06 2 305 19046 3.6 688 3.3 624

MINERVA DAUGHTERS:

STILLMORE TUXEDO MODEL, EX-91
 2-03 2 365 26887 4.9 1313 3.4 925
 3X ALL-AMERICAN HONORS

STILLMORE-LEXY MORGAN-ET, EX-92

4-02 2 365 30560 3.5 1080 3.1 939

STILLMORE-LEXY MINDY, VG-88

2-06 3 305 23150 3.6 840 3.4 789

STILLMORE-LEXY MINNIE

3-01 2 350 24180 4.1 992 3.4 825

Stillmore Cattle Co.

STEVE SEARLES

200 6TH STREET SW, PINE ISLAND, MN 55963

(507) 261-3062

FOL-AYR G. HOTLIPS OF MDF2

EXCELLENT-91



FOL-AYR G. HOTLIPS OF MDF2

100377710 8-00 91 3E P5 +415
 NM\$ -56
 PTA +2.81SCC -1.3PL +0.8DPR
 PTA -356M -8F -8P 51R
 PTA\$ -56CY 8/16
 PTA% +.03 +.02
 PTAT +1.00T 58R 8/16
 PPA -2M +5F +6P
 CLASS ST9 SR7 BD7 DF8 RA5 RW8 LS7 FA5
 FU8 UH7 UW7 UC7 UD6 TP7 TL5 LR5
 GOLD % FAT % PRT
 2-06 2 301 16520 4.2 698 3.1 519
 7-05 2 305 17470 4.0 705 3.0 528
 327 18050 4.1 736 3.1 555

 1ST FALL CALF - 2005 EASTERN STATES NAT'L JR
 3RD AGED COW - 2012 EASTERN STATES NATIONAL

CONVENTIONAL POKER & BURDETTE
 EMBRYOS AVAILABLE

IVF DIXON & POKER EMBRYOS AVAILABLE

BONNIE BRAE GARTH

10006450C
 PTA +3.03SCC -1.6PL +1.1DPR
 PTA -946M -35F -25P 90R
 PTA% +.02
 PTAT +.70T 82R 8/16
 D/AV 18612M 3.8 712F 3.1 584P

CHATEAU GAI HEATHER 19E

1012847 2-09 86
 DHI % FAT % PRT
 5-05 2 305 23670 4.0 941 3.0 710
 315 24140 4.0 960 3.0 728
 6-05 2 305 19620 4.0 775 3.2 634
 348 21350 3.9 837 3.3 700
 7-06 2 305 22300 3.5 774 2.9 656
 341 23660 3.5 827 3.0 703

GRANDDAM: CHATEAU GAI BONNIE 8A

780162C EX-90 CAN
 LIFETIME 117110 4.1 4760 3.2 3796

Ethier Acres

ALAIN ETHIER

40 SUMMIT LAKE ROAD SPUR

ARGYLE, NY 12809

(518-638-6597)

alainethier@nycap.rr.com

ETHIER-ACRES BURDETTE PRINCESS-ET



ETHIER-ACRES BURDETTE PRINCESS-ET

PUREBRED AYRSHIRE 10/04/13 FEMALE

100675274

NM\$ -8 P5 +416

PTA +0F +0P 0R
PTA\$ -8CY 8/16

3RD FALL YEARLING - 2015 EASTERN STATES
NATL JR

DIXON & FACET EMBRYOS AVAILABLE

PALMYRA TRI-STAR BURDETTE-ET

100419568

PTA +2.88SCC +1.2PL +0.2DPR
PTA +261M +6F +14P 99R
PTA% -.02 +.03
PTAT +1.80T 98R 8/16
D/AV 19864M 3.9 778F 3.2 630P 8.5T

MACKAYR ROMEO'S PRIZE

65003066

7-04 91 2E
GOLD % FAT % PRT
5-01 2 305 15210 4.0 612 3.3 509

GRANDDAM: GLENGARRY W PHOBE

998670

GOLD % FAT % PRT
3-09 2 305 15830 3.7 579 3.2 506
310 15950 3.7 583 3.2 510
5-01 2 305 17710 3.5 624 3.3 583
322 17910 3.5 633 3.3 590
6-02 2 305 17910 3.4 607 3.3 586
365 19650 3.4 672 3.3 650

Ethier Acres

ALAIN ETHIER

40 SUMMIT LAKE ROAD SPUR

ARGYLE, NY 12809

(518-638-6597)

alainethier@nycap.rr.com

HAZCROFT REALITY CLEOPATRA-ET

VERY GOOD-86



HAZCROFT REALITY CLEOPATRA-ET

97.5% AYRSHIRE 06/13/13 FEMALE
72511712

2-06 86 ELITE P9 +514

NM\$ +326 NATIONAL CLASS LEADER
PTA +2.98SCC +1.0PL +0.7DPR
PTA +677M +52F +25P 52R
PTA\$ +326CY 8/16
PTA% +.13 +.02
PTAT +.70T 37R 8/16
PPA +3423M +232F +112P

CLASS ST7 SR6 BD6 DF7 RA6 RW7 LS6 FA6
FU7 UH8 UW8 UC8 UD6 TP5 TL4 LR9

GOLD % FAT % PRT
2-01 3 305 24860 5.2 1292 3.3 816
3 365 29513 5.1 1504 3.3 966

#18 8/16 CPI LIST

DAUGHTERS BY ROCKSTAR, MICHIGAN &
REVOLVER

JULY 2016 REVOLVER SON

EMBRYOS AVAILABLE FROM THIS FAMILY

PALMYRA TRI-STAR REALITY

100369452
PTA +3.00SCC +1.4PL +0.4DPR
PTA +451M +25F +5P 96R
PTA% +.04 -.05
PTAT +.80T 94R 8/16
D/AV 20696M 4.0 829F 3.1 638P 8.5T

VAN-DE ORKKO CAITLIN CORKY

100545377 6-03 92 2E ELITE 95%

DHI	%	FAT	%	PRT
1-11 2 305	22970	3.9	903	3.2 729
	349	26100	3.9	1014 3.2 834
3-01 2 305	25500	4.3	1097	3.4 859
4-03 2 305	26990	3.9	1055	3.4 908
5-10 2 305	31950	4.1	1324	3.2 1027
	355	34150	4.2	1432 3.3 1117
6-11 2 305	24640	4.1	1016	3.2 785
LIFE	1785	146570	4.1	6049 3.3 4840

2ND JR 2-YEAR-OLD - 2010 INTERNATIONAL
NOM ALL-AMERICAN JR 2-YEAR-OLD - 2010

GRANDDAM:

S&M-AYR TRIDENT CHERRY CAITLYN

100191064 4-00 90

GOLD	%	FAT	%	PRT
1-11 2 304	18830	3.8	707	2.9 541
2-11 2 330	19630	3.6	716	3.0 583
3-11 2 345	22290	4.0	889	3.0 669
5-00 2 305	20330	4.0	806	2.9 587
7-01 2 365	21160	3.7	792	2.8 592
LIFE	2024	126490	3.8	4810 2.9 3649

Coulee Crest LLC
KURT & SCOTT PETERSON
28752 NAVAJO ROAD, CASHTON, WI 54619
(608) 633-2321
couleecrest@hotmail.com

MAPLE-DELL DREAMER DESTINEE-ET

VERY GOOD-86



MAPLE-DELL DREAMER DESTINEE-ET

94.9% AYRSHIRE 09/05/14 FEMALE
71900266

P7 +453

1-10 2 PROJ 21927 4.1 908 3.3 713

1ST FALL YEARLING IN MILK-2016 IA STATE FAIR
1ST FALL YEARLING IN MILK - 2016 INTERNATIONAL

FIVE MEMBERS OF THIS FAMILY RANK ON
8-16 HIGH CPI LIST

DESTINEE IS OWNED WITH SUSAN EDWARDS

DAFOURTH'S SHOW WINNINGS:

NOM ALL-AMERICAN JR 2-YEAR-OLD - 2004
1ST JR 3-YEAR-OLD - 2005 MID-ATLANTIC NATL
INTERMEDIATE CHAMPION-2005 MID-ATLANTIC NATL
2ND JR 3-YEAR-OLD - 2005 CENTRAL NATIONAL
RES ALL-AMERICAN JR 3-YEAR-OLD - 2005
1ST 4-YEAR-OLD - 2006 MID-ATLANTIC NATIONAL
GRAND CHAMPION - 2006 MID-ATLANTIC NATIONAL
2ND 4-YEAR-OLD - 2006 CENTRAL NATIONAL
RES GRAND CHAMPION - 2006 CENTRAL NATIONAL
RES ALL-AMERICAN 4-YEAR-OLD - 2006

NEXUS DREAMER

103734662C 89.81%
PTA +3.12SCC -3.5PL -3.0DPR
PTA +29M +14F +3P 92R
PTA% +.08 +.01
PTAT +.90T 89R 8/16
D/AV 21088M 4.0 853F 3.2 670P 8.5T

MAPLE-DELL ZORRO DAFOURTH

100257070		6-06 95		2E	
GOLD	%	FAT	%	PRT	
2-00 2	305	22380	4.3	958	3.3 737
3-00 2	305	21790	4.0	866	3.1 676
	310	22000	4.0	871	3.1 682
4-00 2	305	23150	4.7	1080	3.3 762
	365	26200	4.6	1203	3.3 864
6-01 2	305	26150	4.6	1197	3.0 784
	365	30950	4.5	1387	3.0 939
7-11 2	305	23770	4.4	1044	3.0 707
	365	27930	4.3	1193	3.0 838
9-06 2	305	23220	4.7	1098	2.9 668
LIFE	2287	165180	4.4	7191	3.1 5148

GRANDDAM: MAPLE-DELL T-S DARE

100154827		3-03 90			
GOLD	%	FAT	%	PRT	
1-11 2	249	14420	4.3	617	3.1 454
2-10 2	305	22280	4.8	1079	3.3 726
	355	24070	4.8	1157	3.3 792
4-01 2	305	25160	4.9	1240	3.1 792
	365	27290	4.9	1330	3.2 865

Bear-Ayr Farm
DONNA, CASEY & HALEY MERTZ
13970 County Road P18
Blair, NE 68008
(920) 382-7678
hansendvm@hotmail.com

SUNNY-ACRES MODEM BRINLEY

EXCELLENT-91 3E



SUNNY-ACRES MODEM BRINLEY

PUREBRED AYRSHIRE 06/27/08 FEMALE
 100536344 8-03 91 3E P9 +471
 NM\$ +188
 PTA +2.74SCC +0.6PL -1.5DPR
 PTA +476M +29F +12P 50R
 PTA\$ +188CY 8/16
 PTA%
 PTAT +.80T 58R 8/16
 PPA +1680M +39F +23P
 CLASS ST9 SR7 BD7 DF8 RA5 RW7 LS6 FA6
 FU7 UH7 UW7 UC6 UD6 TP5 TL5 LR8
 DHI % FAT % PRT
 2-00 2 305 8640 3.6 314 2.9 248
 3-02 2 305 11680 3.7 432 2.8 325
 342 12620 3.7 467 2.8 351
 4-03 2 305 12010 3.5 424 3.0 355
 358 13430 3.6 486 3.0 399
 6-08 2 305 12190 3.2 395 2.6 322
 331 12650 3.2 411 2.7 336

 GIBBS & NEVILLE (POLLED) EMBRYOS AVAILABLE

DAUGHTERS:

OAKE KNOLL HAMMER BLESSING
 VG 87@ 2-09

OAKE KNOLL GIBBS BREE-
 2ND SPRING CALF-EASTERN STATES NATL 2015

HERD IS GRASS FED!

LAGACE MODEM-ET

8389304C
 PTA +2.69SCC +1.8PL -2.5DPR
 PTA +17F +9P 96R
 PTA% +.09 +.05
 PTAT +.10T 93R 8/16
 D/AV 19832M 3.9 778F 3.2 625P 8.4T

SUNNY-ACRES WILTON'S BOUQUET

100446230 4-06 91
 GOLD % FAT % PRT
 2-05 2 295 18860 3.9 732 3.0 560
 3-05 2 300 24590 4.0 972 3.0 738
 4-04 2 308 29010 4.1 1183 2.9 838
 5-04 2 310 25620 4.3 1103 3.0 756
 6-04 2 313 25410 4.5 1154 2.9 734
 LIFE 1526 123490 4.2 5144 2.9 3626

 1ST WINTER CALF - 2006 MID-ATLANTIC NATIONAL

NOM ALL-AMERICAN WINTER CALF - 2006

2ND WINTER YEARLING - 2007 MID-ATLANTIC

NATIONAL

1ST WINTER YEARLING - 2007 SOUTHERN NATIONAL

NOM ALL-AMERICAN WINTER YEARLING - 2007

GRANDDAM-SUNNY-ACRES PROLY BUNNY

100148806 3-08 87
 GOLD % FAT % PRT
 2-01 2 365 26090 3.7 967 2.9 769
 3-04 2 365 24240 3.6 877 3.0 718
 4-07 2 319 27640 3.4 933 2.9 805
 5-07 2 360 27150 3.7 1016 3.1 832
 LIFE 2065 149030 3.6 5333 3.0 4477

Oake-Knoll Ayrshires

THERESA LAWTON

70 NORTH STREET

FOXBOROUGH, MA 02035

(774) 219-6257

terri_lawton@yahoo.com

RIVER-VALLEY SALUTE DEEDRA

EXCELLENT-93 4E



RIVER-VALLEY SALUTE DEEDRA

PUREBRED AYRSHIRE 10/25/06 FEMALE
100508877

9-04 93 4E P- +339

NM\$ -2
PTA +2.87SCC +0.5PL +1.0DPR
PTA -32M -4F -5P 39R
PTA\$ -2CY 8/16
PTA% -.01 -.02

PPA +1573M +44F +35P
CLASS ST9 SR7 BD8 DF8 RA7 RW8 LS5 FA5
FU8 UH9 UW9 UC8 UD6 TP5 TL7 LR8
GOLD % FAT % PRT
5-07 2 305 22960 4.1 944 3.5 803
365 25310 4.0 1018 3.5 890
7-08 3 305 28830 2.7 789 3.1 884
351 30540 2.8 860 3.1 941

1ST SR 3-YEAR-OLD - 2010 CENTRAL NATIONAL JR
1ST SR 3-YEAR-OLD - 2010 SOUTHERN NAT'L JR
2ND SR 3-YEAR-OLD - 2010 SOUTHERN NATIONAL
NOM ALL-AMERICAN SR 3-YEAR-OLD - 2010
JR ALL-AMERICAN SR 3-YEAR-OLD - 2010
2ND 4-YEAR-OLD - 2011 CENTRAL NATIONAL JR
3RD 4-YEAR-OLD - 2011 SOUTHERN NATIONAL
NOM ALL-AMERICAN 4-YEAR-OLD - 2011
HM JR ALL-AMERICAN 4-YEAR-OLD - 2011
1ST 5-YEAR-OLD - 2012 CENTRAL NATIONAL JR
NOM ALL-AMERICAN 5-YEAR-OLD - 2012
JR ALL-AMERICAN 5-YEAR-OLD - 2012
3RD AGED COW - 2014 CENTRAL NATIONAL JR

PALMYRA BATTLE SALUTE-ET

100386341

RIVER-VALLEY JELLY DEE

100097164 5-08 92
8-10 2 365 21035 3.5 726 3.2 676

GRANDDAM: RIVER-VALLEY MILKY JELLY

976468

DEEDRA IS OWNED BY FOUR HILLS FARM.

DEEDRA'S BURDETTE SON IS THE
CURRENT HERD SIRE AT RIVER VALLEY.

River Valley Farm
THE ALLEN FAMILY

5151 E Hubbardton Rd.
Castleton, VT 05735

(802) 273-2415 • Randy cell: (802) 353-3019

SCAPELAND DB SICILY

EXCELLENT-91



SCAPELAND DB SICILY

98.84% AYRSHIRE 03/02/13 FEMALE
 100658880 3-07 91 P8 +452
 NM\$ +86
 PTA +2.93SCC +0.6PL +0.9DPR
 PTA +37M +0F +8P 40R
 PTA\$ +86CY 8/16
 PTA%
 PTAT +1.30T -.01 +.04 42R 8/16
 PPA +471M +34F +30P
 CLASS ST7 SR5 BD7 DF7 RA4 RW8 LS5 FA5
 FU7 UH7 UW6 UC7 UD7 TP5 TL2 LR8
 DHI % FAT % PRT
 2-03 2 305 15490 4.0 617 3.2 494
 309 15680 4.0 624 3.2 500

FAMILY-AF-AYR REM DBL BARREL-ET

100601945 97.68%
 PTA +3.14SCC -0.9PL +2.8DPR
 PTA -346M -28F -3P 85R
 PTA% -.07 +.04
 PTAT +1.50T 71R 8/16
 D/AV 22015M 3.8 844F 3.2 697P 8.5T

SCAPELAND BENDIG SUSI

100601235

GRANDDAM: SCAPELAND TRI STAR SPARKLE

100385386 2-09 82
 DHI % FAT % PRT
 2-02 2 305 16180 4.2 687 3.3 539
 3-05 2 285 16210 4.5 735 3.4 549
 4-06 2 274 17160 4.3 731 3.3 574
 5-05 2 274 19180 3.0 574 3.3 638
 6-06 2 247 16500 3.9 646 3.3 542
 7-08 2 263 17670 3.8 663 3.1 555
 LIFE 1900 113860 3.9 4441 3.3 3781

1ST SPRING CALF-2013 EASTERN STATES NAT'L JR
 1ST SPRING CALF - 2013 EASTERN STATES NAT'L
 1ST SPRING CALF - 2013 CENTRAL NATIONAL JR
 1ST SPRING CALF - 2013 INTERNATIONAL
 UNAN ALL-AMERICAN SPRING CALF - 2013
 UNAN JR ALL-AMERICAN SPRING CALF - 2013
 1ST SPRING YRLG-2014 EASTERN STATES NAT'L
 1ST SPRING YRLG-2014 EASTERN STATES NAT'L JR
 JUNIOR CHAMPION-2014 EASTERN STATES NAT'L JR
 NOM JR ALL-AMERICAN SPRING YEARLING - 2014
 2ND JR 2-YEAR-OLD - 2015 CENTRAL NAT'L JR
 RES JR ALL-AMERICAN JR 2-YEAR-OLD - 2015
 1ST JR 3-YR-OLD - 2016 EASTERN STATES NAT'L
 RES JR ALL-AMERICAN JR 2-YEAR-OLD - 2015
 1ST JR 3-YR-OLD - 2016 EASTERN STATES NAT'L
 1ST JR 3-YR-OLD-2016 EASTERN STATES NAT'L JR
 INT CHAMP - 2016 EASTERN STATES NATIONAL
 INT CHAMP - 2016 EASTERN STATES NAT'L JR
 RES GRAND - 2016 EASTERN STATES NAT'L
 GRAND CHAMPION - 2016 EASTERN STATES NAT'L JR
 1ST JR 3-YEAR-OLD - 2016 INTERNATIONAL
 1ST JR 3-YEAR-OLD - 2016 CENTRAL NATIONAL JR
 INT CHAMPION - 2016 CENTRAL NATIONAL JR
 RES GRAND CHAMPION - 2016 CENTRAL NAT'L JR

Scapeland Farm

CINDY CRAWFORD; KURT & DACEY ANECHARICO

165 SAWYER NEEDHAM

WHITING, VT 057778

(802) 623-6934

ayrgaze@sover.net

CONEBELLA AVENGER'S DOVE

EXCELLENT-91 3E



CONEBELLA AVENGER'S DOVE

PUREBRED AYRSHIRE 08/07/07 FEMALE
 100517707 8-02 91 3E P8 +456
 NM\$ +249
 PTA +2.71SCC +3.1PL
 PTA +207M +14F +11P 52R
 PTA\$ +249CY 8/16
 PTA%
 PTAT +.70T +.03 +.02 60R 8/16
 PPA +3288M +91F +93P

CLASS	ST9	SR8	BD8	DF9	RA5	RW8	LS5	FA6
	FU7	UH8	UW9	UC8	UD5	TP5	TL7	LR6
GOLD				%	FAT	%	PRT	
2-07	2	305	21350	3.9	822	3.1	669	
			365	25390	3.8	968	3.2	810
4-01	2	305	25460	3.6	910	3.2	813	
			352	27340	3.6	993	3.2	881
5-02	2	305	22660	3.1	709	3.0	688	
			337	24130	3.1	744	3.1	742
6-03	2	305	24920	3.5	875	3.2	794	
			365	28560	3.6	1030	3.2	915
7-06	2	305	29120	3.9	1142	2.8	826	
			352	31570	3.9	1243	2.9	906
LIFE	1980	149070	3.7	5508	3.1	4674		

KELLCREST AVENGER-ET

100273427
 PTA +2.73SCC +4.2PL +2.1DPR
 PTA -102M +5F -3P 96R
 PTA% +.05
 PTAT +.50T 91R 8/16
 D/AV 18311M 4.0 724F 3.1 573P 8.4T

CONEBELLA TRIDENT'S EAGLE

100224517 6-03 87

GOLD				%	FAT	%	PRT
2-03	2	305	14410	4.7	679	3.5	499
			365	16670	4.8	795	3.5
3-10	2	304	20470	4.2	866	3.4	698
4-10	2	305	22320	4.1	922	3.2	717
			365	24660	4.2	1028	3.3

GRANDDAM: CONEBELLA CORSAIRE'S ORIOLE

1013824 5-07 81

GOLD				%	FAT	%	PRT
2-01	2	291	15450	4.3	669	3.6	554
3-01	2	305	20930	4.1	864	3.7	768
			318	21570	4.1	894	3.7
4-02	2	305	26020	3.8	993	3.4	891
			334	27660	3.8	1063	3.5
5-03	2	305	22580	4.4	999	3.6	808
			346	24910	4.4	1101	3.6
6-04	2	262	18330	4.1	747	3.7	674
			305	21050	4.1	870	3.7
			365	23910	4.1	992	3.7
LIFE	1833	120440	4.1	4992	3.6	4347	



Conebella Farms
DON & PAM GABLE, JOSHUA, TYLER & KEVIN
 337 Chestnut Tree Rd., Elverson, PA 19520
 (610) 286-2967 • Cell (484) 824-2164
 gable@conebellafarm.com • www.conebellafarm.com
 Farm Fresh Cheese & Spreads

CONEBELLA PERCY'S TIVA

VERY GOOD-88



CONEBELLA PERCY'S TIVA

94.15% AYRSHIRE	02/09/12	FEMALE	94.15%
70479086			
	3-08 88	ELITE P9	+557
NM\$	+398		
PTA	+2.68SCC	-1.1PL	+0.9DPR
PTA	+1052M	+58F	+53P 53R
PTA\$	+398CY		8/16
PTA%		+0.09	+0.10
PTAT	+0.20T		50R 8/16
PPA	+3153M	+226F	+171P
CLASS	ST9 SR5 BD7 DF7 RA5 RW7 LS6 FA7		
	FU8 UH7 UW6 UC7 UD5 TP5 TL7 LR8		
GOLD		%	FAT % PRT
2-02	2 296 18290	4.1	751 3.5 637
3-01	2 305 22240	5.0	1115 3.8 841
	365 25290	5.1	1286 3.9 978

RANKED #4 ON 8/16 HIGH CPI LIST

KILDARE PERCY-ET

103036515C			93%
PTA	+2.62SCC	-4.3PL	-0.9DPR
PTA	+1696M	+65F	+52P 89R
			8/16
PTA%		-0.01	-0.01
PTAT	-0.30T		69R 8/16
D/AV	20661M 4.0	821F 3.2	651P 8.3T

CONEBELLA ORKKO'S TITO

100552513			95.3%
	4-06 83	ELITE	
GOLD		%	FAT % PRT
2-03	2 305 16690	3.8	627 3.5 588
	306 16720	3.8	629 3.5 589
3-03	2 277 18760	3.1	573 3.6 680
4-02	2 296 21570	3.6	774 3.6 768
5-03	2 279 19120	3.8	723 3.4 655
6-02	2 303 17030	3.9	671 3.3 566

GRANDDAM: CONEBELLA PERCEVAL'S TONI

100437467	4-01 86		
GOLD		%	FAT % PRT
1-10	2 305 21350	3.3	710 3.2 690
	318 22280	3.3	742 3.2 723
2-11	2 266 17210	3.7	637 3.2 559
3-10	2 271 16740	3.8	639 3.3 548



Conebella Farms

DON & PAM GABLE, JOSHUA, TYLER & KEVIN

337 Chestnut Tree Rd., Elverson, PA 19520

(610) 286-2967 • Cell (484) 824-2164

gable@conebellafarm.com • www.conebellafarm.com

Farm Fresh Cheese & Spreads

BLUE-SPRUCE BALTIMORE 9822

EXCELLENT-93



BLUE-SPRUCE BALTIMORE 9822

PUREBRED AYRSHIRE 03/01/11 FEMALE
840003006538230

4-08 93 P6 +426

NM\$ -3
PTA +2.93SCC +0.2PL -0.6DPR
PTA -260M -2F -2P 53R
PTA\$ -3CY 8/16

PTA% +.05 +.04
PTAT +1.30T 59R 8/16
PPA +789M +89F +38P

CLASS ST8 SR6 BD9 DF9 RA4 RW9 LS5 FA5
FU6 UH8 UW9 UC8 UD5 TP7 TL2 LR7

DHI	%	FAT	%	PRT
2-03 2 296	16453	4.4	726	3.4 562
3-03 2 305	21019	4.6	965	3.4 721
	334	22260	4.6	1021 3.5 769
4-04 2 305	24275	3.9	955	3.2 786
	327	25881	3.9	1020 3.3 842
5-04 2 35	2467	4.3	106	3.8 93

1ST SPRING YEARLING - 2012 EASTERN STATES

NATL

NOM ALL-AMERICAN SPRING YEARLING - 2012

2ND JR 3-YEAR-OLD - 2014 EASTERN STATES NATL

RES INT CHAMP - 2014 EASTERN STATES NAT'L

MILKING CALIMERO DAUGHTERS &
HEIFERS BY PRIME & NEMO

PALMYRA PARDNER BALTIMORE-ET

100279731

PTA +3.07SCC +0.8PL -1.3DPR
PTA -422M -10F -9P 95R
PTA% +.04 +.03
PTAT +.30T 89R 8/16
D/AV 18851M 3.9 743F 3.2 598P 8.4T

BLUE-SPRUCE REMINGTON 8179

840003004041639 4-05 91

DHI % FAT % PRT
3-04 2 298 21050 3.8 796 3.5 729

GRANDDAM: SCAPELAND RESTLESS BRIDGET

100478699

DHI	%	FAT	%	PRT
2-03 2 305	17440	3.8	671	3.1 532
	351	19380	3.9	756 3.1 599
3-04 2 300	16320	4.0	660	2.9 471
4-03 2 305	24420	3.8	928	3.1 745
	309	24650	3.8	935 3.1 752
5-03 2 305	23780	3.5	844	3.0 725

Blue-Spruce Farm
EUGENE & NATHAN AUDET

1796 VT RTE 22A

Bridport VT 05734

(802-758-2179) • Nathan cell: (802-989-0649) • Eugene home: (802-753-2359)

Email: bsf@gmavt.net • www.bluesprucefarmvt.com

MILLER'S LAREDO NORA

EXCELLENT-92



MILLER'S LAREDO NORA

PUREBRED AYRSHIRE 06/01/04 FEMALE
100381814

	9-00	92		P-	+311			
NM\$	-228							
PTA	+2.96SCC	-1.5PL	+0.8DPR					
PTA	-806M	-28F	-28P	53R				
PTA\$	-228CY			8/16				
PTA%		+0.2	-.01					
PTAT	-.50T		56R	8/16				
PPA	-1593M	-57F	-64P					
CLASS	ST7	SR8	BD9	DF6	RA5	RW8	LS5	FA7
	FU6	UH8	UW9	UC7	UD4	TP6	TL6	LR8
GOLD								
2-00	2	305	15660	4.2	658	3.2	497	
		365	17420	4.2	730	3.2	562	
3-08	2	305	22570	4.0	902	3.0	685	
5-06	2	305	24650	3.7	923	2.9	720	
		359	26170	3.8	993	3.0	780	
6-09	2	305	20370	4.0	811	3.2	649	
		365	21920	4.0	877	3.2	709	
8-06	2	305	22730	4.1	927	3.0	678	
		365	25650	4.31	1049	3.0	781	

DAUGHTER:

MILLER'S HERMON NINA	-82	@	3-06
3-10	2	350	24880 3.7 917 3.2 789
5-00	2	281	23910 3.4 823 2.8 674

FAUCHER GALANT LAREDO-ET

	100270282		
PTA	+3.10SCC	-2.4PL	-0.5DPR
PTA	-454M	-11F	-8P 80R
			8/16
PTA%		+0.4	+0.3
PTAT	+1.20T		79R 8/16
D/AV	20577M 4.0	822F 3.2	656P 8.6T

MILLER'S JAMES NORLENE

	100068173	7-01	86
GOLD			% FAT % PRT
2-11	2	280	14400 4.5 653 3.2 454
3-10	2	305	19110 4.1 783 3.2 602
		365	21590 4.1 889 3.2 684
5-06	2	305	20720 4.1 841 3.2 660
		365	23850 4.1 976 3.2 767
6-08	2	305	19980 4.2 842 3.3 652
		365	23000 4.1 952 3.3 751

GRANDDAM: MILLER'S LIBERACE NORLENE

	979584	3-10	85	VVV++
DHIR			% FAT % PRT	
2-08	2	305	17600 3.8 668 3.2 569	
		365	19880 3.9 766 3.3 657	
3-10	2	305	19630 3.7 732 3.3 646	
		359	21190 3.8 803 3.3 706	
4-11	2	305	20530 3.6 738 3.4 691	
		365	22590 3.6 820 3.4 768	

Miller's Ayrshires

JACK & MICK MILLER

12261 PEMBERVILLE ROAD

BRADNER, OH 43406

(419) 288-2834 • Mick (419) 288-2210

STEAM-VALLEY WILTON MAGIC BRI

EXCELLENT-94 2E



STEAM-VALLEY WILTON MAGIC BRI

PUREBRED AYRSHIRE 06/24/06 FEMALE
 100475641 5-03 94 2E P8
 +401
 NM\$ -126
 PTA +3.17SCC -2.7PL -2.1DPR
 PTA -139M -6F +6P 55R
 PTA\$ -126CY 8/16
 PTA% +.06
 PTAT +.40T 46R 8/16
 PPA +1636M +35F +66P
 CLASS ST9 SR8 BD9 DF9 RA5 RW9 LS6 FA7
 FU5 UH9 UW9 UC8 UD4 TP5 TL7 LR9
 DHI % FAT % PRT
 2-04 2 305 15940 4.1 659 3.3 526
 313 16280 4.1 673 3.3 537
 3-04 2 352 23530 3.6 845 3.1 726
 4-10 2 305 26430 3.6 963 3.1 813
 336 28210 3.6 1004 3.1 878
 5-11 2 364 32470 3.3 1058 3.0 977
 7-01 2 273 23050 3.2 732 3.0 695
 LIFE 1638 123540 3.5 4312 3.1 3813

3RD SUMMER YEARLING - 2007 CENTRAL NATIONAL
 1ST 5-YEAR-OLD - 2011 INTERNATIONAL
 SENIOR CHAMPION - 2011 INTERNATIONAL
 GRAND CHAMPION - 2011 INTERNATIONAL
 UNAN ALL-AMERICAN 5-YEAR-OLD - 2011
 ALL-WORLD 5-YEAR-OLD - 2011
 3RD AGED COW - 2012 INTERNATIONAL
 HM ALL-AMERICAN AGED COW - 2012
 1ST 100,000 LB COW - 2013 INTERNATIONAL
 TOTAL PERFORMANCE WINNER-2013 INTERNATIONAL
 UNAN ALL-AMERICAN 100,000 LB COW - 2013

LABRIE WILTON-ET

10304106C
 PTA +3.28SCC -3.4PL -2.3DPR
 PTA -251M -24F +5P 97R
 PTA% -.08 +.07
 PTAT +.60T 95R 8/16
 D/AV 18375M 3.8 703F 3.2 591P 8.4T

AYRDELL'S TRI MAGIC BARBIE

100381421 2-01 85
 GOLD % FAT % PRT
 2-00 2 265 15370 3.4 520 3.0 462
 DHI
 3-00 2 272 8030 3.9 316 2.9 229

1ST SUMMER YEARLING - 2005 SOUTHERN NATIONAL
 3RD SUMMER YEARLING - 2005 SOUTHERN NAT'L JR
 NOM ALL-AMERICAN SUMMER YEARLING - 2005
 HM JR ALL-AMERICAN SUMMER YEARLING - 2005

GRANDDAM: AYRDELL'S JETSTREAM BARBRA

100250224
 GOLD % FAT % PRT
 2-07 2 305 15260 4.9 747 3.3 501
 365 17670 5.0 882 3.3 589

PREGNANCIES BY BURDETTE, VICKING,
 GENTLEMAN, REALITY, CLASS ACT &
 DISTINCTION

EMBRYOS BY REALITY & CLASS ACT

OWNED WITH JOHN CANNON,
 DYERSVILLE, IA

Old Bankston

KURT WOLF

24474 N BANKSTON ROAD

EPWORTH, IA 52045

(563) 543-2986

oldbankstonayrshires@gmail.com

SHARWARDS CALIMERO MEGAN

EXCELLENT-94 2E



SHARWARDS CALIMERO MEGAN

95.37% AYRSHIRE 03/23/07 FEMALE
100515910 95.37%
5-05 94 2E P7 +392

NM\$	-132								
PTA	+3.16SCC	-1.2PL	+1.4DPR						
PTA	-404M	-22F	-12P	54R					
PTA\$	-132CY			8/16					
PTA%		-.03							
PTAT	+1.10T		56R	8/16					
PPA	+84M	-20F	+13P						
CLASS	ST7	SR8	BD8	DF9	RA5	RW7	LS6	FA7	
	FU9	UH8	UW9	UC9	UD7	TP5	TL4	LR8	
GOLD									
2-02	2	266	17280	3.7	646	3.0	525		
3-01	2	305	20620	3.0	622	3.2	651		
		321	21320	3.0	650	3.2	677		
4-03	2	305	19600	3.4	669	3.2	628		
		309	19780	3.4	675	3.2	634		
5-03	2	280	20040	3.3	661	3.2	650		
6-02	2	305	22210	4.3	951	3.3	723		
		326	23130	4.2	978	3.3	760		
7-06	2	305	25550	4.7	1194	3.1	784		
		365	28120	4.6	1303	3.1	884		
LIFE	1884	130230	3.8	4948	3.2	4155			

PREGNANCIES BY VICKING, GENTLEMEN & DISTINCTON

OWNED WITH MIKE MAIER, STITZER, WI

MARGOT CALIMERO

10310847C 90.75%
PTA +3.05SCC -1.4PL +0.4DPR
PTA -379M +0F -3P 97R
8/16
PTA% +.08 +.05
PTAT +1.10T 94R 8/16
D/AV 19462M 4.0 770F 3.2 621P 8.6T

SHARWARDS RAMIUS MEGAN

100344743
GOLD % FAT % PRT
2-03 2 257 13670 4.1 562 3.0 416

GRANDDAM: SHARWARDS KELLOGG MACY

100232558 3-04 88
GOLD % FAT % PRT
2-00 2 305 14110 3.3 467 3.0 422
311 14320 3.3 473 3.0 429
3-02 2 279 19120 2.9 550 3.0 577
4-01 2 277 17190 3.7 633 3.1 534

MEGAN SHOW WINNINGS:

ALL-AMERICAN JR 3-YEAR-OLD - 2010
UNAN ALL-AMERICAN 4-YEAR-OLD - 2011
RES SENIOR CHAMPION - 2012 INTERNATIONAL
RES GRAND CHAMPION - 2012 INTERNATIONAL
ALL-AMERICAN 5-YEAR-OLD - 2012
ALL WORLD 5-YEAR-OLD - 2012
SENIOR CHAMPION - 2013 SOUTHERN NATIONAL
GRAND CHAMPION - 2013 SOUTHERN NATIONAL
RES ALL-AMERICAN AGED COW - 2013
RES SENIOR CHAMPION - 2014 INTERNATIONAL
UNAN ALL-AMERICAN 100,000 LB COW - 2014

Old Bankston

KURT WOLF

24474 N BANKSTON ROAD

EPWORTH, IA 52045

(563) 543-2986

oldbankstonayrshires@gmail.com

OLD-BANKSTON JC BRI'S BIKINI-ET

VERY GOOD-89



OLD-BANKSTON JC BRI'S BIKINI-ET

95.37% AYRSHIRE 09/19/12 FEMALE
 69949958 3-06 89 95.37%
 P5 +418

NM\$ -87
 PTA +3.14SCC -2.8PFL -0.5DPR
 PTA -188M -1F +4P 47R
 PTA\$ -87CY +.03 +.06 8/16
 PTA%
 PTAT +.70T +.08 47R 8/16
 PPA -80M +12F +22P

CLASS ST9 SR6 BD7 DF5 RA4 RW7 LS5 FA7
 FU6 UH8 UW6 UC6 UD7 TP5 TL4 LR7

DHI % FAT % PRT
 2-08 2 305 18720 3.8 707 3.2 598
 342 21320 3.9 827 3.2 689

1ST SR 2-YEAR-OLD - 2015 SOUTHERN NATIONAL
 RES INTERMEDIATE CHAMP - 2015 SOUTHERN NATL
 NOM ALL-AMERICAN SR 2-YEAR-OLD - 2015

PREGNANCIES BY BURDETTE & REAGAN

OWNED WITH JOHN CANNON,
 DYERSVILLE, IA

MARGOT CALIMERO

10310847C 90.75%
 PTA +3.05SCC -1.4PFL +0.4DPR
 PTA -379M +0F -3P 97R
 PTA% +.08 +.05
 PTAT +1.10T 94R 8/16
 D/AV 19462M 4.0 770F 3.2 621P 8.6T

STEAM-VALLEY WILTON MAGIC BRI

100475641 5-03 94 2E

DHI	%	FAT	%	PRT
2-04 2 305	15940 4.1	659 3.3	526	
	313 16280 4.1	673 3.3	537	
3-04 2 352	23530 3.6	845 3.1	726	
4-10 2 305	26430 3.6	963 3.1	813	
	336 28210 3.6	1004 3.1	878	
5-11 2 364	32470 3.3	1058 3.0	977	
7-01 2 273	23050 3.2	732 3.0	695	
LIFE	1638 123540 3.5	4312 3.1	3813	

3RD SUMMER YEARLING - 2007 CENTRAL NATIONAL
 1ST 5-YEAR-OLD - 2011 INTERNATIONAL
 SENIOR CHAMPION - 2011 INTERNATIONAL
 GRAND CHAMPION - 2011 INTERNATIONAL
 UNAN ALL-AMERICAN 5-YEAR-OLD - 2011
 ALL-WORLD 5-YEAR-OLD - 2011
 3RD AGED COW - 2012 INTERNATIONAL
 HM ALL-AMERICAN AGED COW - 2012
 1ST 100,000 LB COW - 2013 INTERNATIONAL
 TOTAL PERFORMANCE WINNER - 2013 INTERNATIONAL
 UNAN ALL-AMERICAN 100,000 LB COW - 2013

Old Bankston

KURT WOLF

24474 N BANKSTON ROAD

EPWORTH, IA 52045

(563) 543-2986

oldbankstonayrshires@gmail.com

DE LA PLAINE REMINGTON WING-ET

EXCELLENT-92 2E



DE LA PLAINE REMINGTON WING-ET

PUREBRED AYRSHIRE 03/01/11 FEMALE
100618695 5-01 92 2E P9 +481

NM\$ -51
PTA +0F +0P 0R
PTA\$ -51CY 8/16
PTAT +.80T 51R 8/16

CLASS ST9 SR7 BD9 DF7 RA3 RW6 LS6 FA6
FU8 UH8 UW6 UC5 UD8 TP6 TL4 LR8

2ND JR 3-YEAR-OLD - 2014 SOUTHERN NATIONAL

PREGNANCIES BY BURDETTE

EMBRYOS BY BURDETTE & REALITY

OWNED WITH MIKE MAIER, STITZER, WI

MAPLEBURN REMINGTON-ET

10316238C
PTA +3.12SCC +0.5PL +0.3DPR
PTA -722M -45F -18P 91R
PTA% -.09 +.02
PTAT +1.20T 84R 8/16
D/AV 17718M 3.7 664F 3.2 571P

FOREVER SCHOON PING

9591001C EX-94 2E

DHI	%	FAT	%	PRT
2-03 2 305	16407	4.5	739	3.7 604
	365	19628	4.6	902 3.7 732
3-08 2 305	23294	4.6	1060	3.5 805
	365	26989	4.6	1239 3.5 946
5-02 2 305	23616	4.4	1045	3.5 825
	365	27236	4.4	1210 3.6 972
8-03 2 305	23649	4.6	1096	3.4 807
	336	25371	4.6	1177 3.4 871

RES ALL-AMERICAN SR 2, 2010

ALL-CANADIAN SR 2, 2010

ALL-AMERICAN SR 3, 2011

RES ALL-CANADIAN SR 3, 2011

NOM ALL-AMERICAN 5 YR OLD, 2013

GRANDDAM: FOREVER SCHOON PRETTY

7441960C EX-93 2E

DHI	%	FAT	%	PRT
2-05 2 313	17496	4.8	844	3.6 624
3-05 2 342	22425	4.8	1082	3.8 849
4-07 2 359	25064	4.4	1098	3.6 895
6-07 2 365	26026	4.6	1206	3.4 884

Old Bankston

KURT WOLF

24474 N BANKSTON ROAD

EPWORTH, IA 52045

(563) 543-2986

oldbankstonayrshires@gmail.com

GLENMAR DALE BURDETTE BECKY

EXCELLENT-91



GLENMAR DALE BURDETTE BECKY

PUREBRED AYRSHIRE 11/01/12 FEMALE
 100653979 3-08 91 P6 +428
 NM\$ -3
 PTA +2.98SCC -1.1PL -0.6DPR
 PTA +86M +2F +3P 46R
 PTA\$ -3CY 8/16
 PTA%
 PTAT +1.00T 39R 8/16
 PPA +929M +32F +21P
 CLASS ST8 SR5 BD8 DF8 RA3 RW9 LS5 FA6
 FU6 UH7 UW6 UC6 UD7 TP5 TL5 LR7
 GOLD % FAT % PRT
 2-05 2 305 18240 3.8 700 3.1 567
 365 21120 3.9 822 3.2 666
 3-07 2 PROJ 23837 5.3 1261 3.0 696

 2ND FALL CALF - 2013 INTERNATIONAL
 3RD FALL CALF - 2013 SOUTHERN NATIONAL JR
 RES ALL-AMERICAN FALL CALF - 2013
 NOM JR ALL-AMERICAN FALL CALF - 2013
 NOM (TIE) ALL-AMERICAN FALL YEARLING - 2014
 HM JR ALL-AMERICAN FALL YEARLING - 2014
 1ST SR. 3 YEAR OLD- 2016
 INTERMEDIATE CHAMPION, RESERVE GRAND-2016 WI
 STATE SHOW

DAUGHTER: GLENMAR-DALE BEDAZZLE
 2ND SPRING YEARLING - 2016 WI STATE SHOW

FULL SISTER:
 GLENMAR-DALE BUDETTE BOOYAH
 2ND FALL CALF - 2016 WI STATE SHOW,
 HM JUNIOR CHAMPION
 1ST FALL CALF, 2016 SOUTHERN NAT'L

PALMYRA TRI-STAR BURDETTE-ET

100419568
 PTA +2.88SCC +1.2PL +0.2DPR
 PTA +261M +6F +14P 99R
 PTA% -.02 +.03
 PTAT +1.80T 98R 8/16
 D/AV 19864M 3.9 778F 3.2 630P 8.5T

P&A MODESTO BRENDA

68847232 6-03 88
 GOLD % FAT % PRT
 3-02 2 305 14820 3.9 571 3.3 485
 365 16560 3.9 639 3.4 555
 4-07 2 305 13740 4.0 545 3.2 436
 364 14960 4.0 591 3.2 483

 1ST FALL CALF - 2010 CENTRAL NATIONAL JR
 1ST FALL CALF - 2010 INTERNATIONAL
 JUNIOR CHAMPION - 2010 CENTRAL NATIONAL JR
 1ST FALL CALF - 2010 SOUTHERN NATIONAL JR
 JUNIOR CHAMPION - 2010 SOUTHERN NATIONAL JR
 ALL-AMERICAN FALL CALF - 2010
 UNAN JR ALL-AMERICAN FALL CALF - 2010
 1ST FALL YEARLING - 2011 CENTRAL NATIONAL JR
 NOM ALL-AMERICAN FALL YEARLING - 2011
 RES JR ALL-AMERICAN FALL YEARLING - 2011

GRANDDAM: SMITH BROS SUNFIRE BETSY

100489295
 1ST SPRING CALF - 2007 SOUTHERN NATIONAL
 NOM ALL-AMERICAN SPRING CALF - 2007

Glenmar-Dale
MARK & BECKY BROWN
 3704 WILLOW ROAD
 STITZER, WI 53825
 (608) 732-8149

GOOD-VUE BURDETTES GOODTIME EXCELLENT-91



GOOD-VUE BURDETTES GOODTIME

PUREBRED AYRSHIRE 11/14/12 FEMALE
840003009378978
3-11 91 P9 +464

NM\$	+145							
PTA	+2.85SCC	+0.8PFL	-0.2DPR					
PTA	+561M	+10F	+18P	47R				
PTA\$	+145CY			8/16				
PTA%		-.06						
PTAT	+1.10T		51R	8/16				
PPA	+1421M	+31F	+48P					
CLASS	ST7	SR6	BD6	DF6	RA4	RW6	LS5	FA7
	FU6	UH7	UW6	UC7	UD6	TP4	TL4	LR7
GOLD							%	FAT % PRT
2-02	2	305	17250	3.7	643	3.2	554	
		365	19830	3.7	728	3.3	655	
3-06		PROJ	23086	3.8	877	3.0	699	

3RD SR 2-YEAR-OLD - 2015 CENTRAL NATIONAL JR
HM JR ALL-AMERICAN SR 2-YEAR-OLD - 2015

RANEY EMBRYOS AVAILABLE.

MGD: PALMYRA SATELLITE L GINGER

SHOW RESULTS:

NOM JR ALL-AMERICAN SENIOR HEIFER CALF - 2001
2ND MILKING SR YRLG-2002 MID-ATLANTIC NAT'L
2ND MILKING SR YRLG-2002 MID-ATLANTIC NAT'L JR
1ST MILKING SR YRLG-2002 SOUTHERN NATIONAL
1ST MILKING SR YRLG-2002 SOUTHERN NATIONAL JR
RES ALL-AMERICAN MILKING SR YEARLING - 2002
JR ALL-AMERICAN MILKING SR YEARLING - 2002

PALMYRA TRI-STAR BURDETTE-ET

100419568
PTA +2.88SCC +1.2PL +0.2DPR
PTA +261M +6F +14P 99R
PTA% -.02 +.03
PTAT +1.80T 98R 8/16
D/AV 19864M 3.9 778F 3.2 630P 8.5T

PALMYRA RAVEN S GINGERANNE

65003054 5-05 80

GOLD			%	FAT	%	PRT
2-01	2	290	17180	3.2	558	3.1 533
3-00	2	305	18470	3.5	649	3.0 548
		326	19230	3.5	677	3.0 574
4-01	2	305	18800	3.3	626	3.1 583
		337	19780	3.4	677	3.1 623
5-01	2	305	23660	3.7	878	2.9 696
		306	23710	3.7	880	2.9 698
6-01	2	216	17410	3.4	585	3.0 520
		291	20500	3.4	690	3.0 613
LIFE	1550	100400	3.5	3482	3.0	3041

GRANDDAM: PALMYRA SATELLITE L GINGER

100164712 4-10 86

GOLD			%	FAT	%	PRT
2-00	2	303	20350	3.8	771	3.1 636
2-11	2	303	15310	3.5	543	3.0 464
3-11	2	305	19110	3.9	743	3.1 586
		365	20860	3.9	804	3.1 648
5-01	2	299	23620	3.6	844	3.0 715
6-00	2	298	25100	3.1	789	2.9 731
LIFE	1569	105260	3.6	3752	3.0	3195

Good-Vue Ayr Farms

MICHAEL & LINDA HANSON, DAVID, MATTHEW & STEVEN

35400 ST HWY 1 NE

GOODRIDGE, MN 56725

(218) 378-4588

Email: miliha@gvtel.com

HAZCROFT GIGI GABRIELLA-ET

VERY GOOD-89



HAZCROFT GIGI GABRIELLA-ET

PUREBRED AYRSHIRE 06/01/13 FEMALE
 72511709 2-04 89 P8 +455
 NM\$ +126
 PTA +3.00SCC +1.7PL -0.8DPR
 PTA +383M +14F +0P 47R
 PTA\$ +126CY 8/16
 PTA%
 PTAT +1.80T -0.1 -0.06 49R 8/16
 PPA +1214M +54F -3P
 CLASS ST7 SR7 BD7 DF8 RA5 RW6 LS6 FA5
 FU9 UH9 UW8 UC9 UD8 TP5 TL4 LR6
 DHI % FAT % PRT
 2-02 2 305 19340 4.3 829 3.0 572

 VICKING EMBRYOS AVAILABLE.

MGD: PALMYRA RAVEN S. GINGER
 SHOW RESULT

1ST FALL CALF - 2004 CENTRAL NAT'L
 1ST FALL CALF - 2004 CENTRAL NAT'L
 ALL-AMERICAN FALL CALF - 2004
 JR ALL-AMERICAN FALL CALF - 2004
 1ST FALL YRLG IN MILK-2005 MID-ATLANTIC NAT'L
 RES INT CHAMPION-2005 MID-ATLANTIC NAT'L
 1ST FALL YRLG IN MILK-2005 MID-ATLANTIC
 NAT'L JR
 INT CHAMPION-2005 MID-ATLANTIC NAT'L JR
 GRAND CHAMPION - 2005 MID-ATLANTIC NAT'L JR
 1ST FALL YRLG IN MILK- 2005 CENTRAL NATL
 1ST FALL YRLG IN MILK - 2005 CENTRAL NAT'L JR
 UNAN ALL-AMERICAN FALL YRLG IN MILK - 2005
 UNAN JR ALL-AMERICAN FALL YRLG IN MILK - 2005

OWNED WITH PALMYRA FARM,
 HAGERSTOWN, MD

PALMYRA BENDIG BERKELY-ET

69261805
 PTA +3.06SCC +1.2PL +0.1DPR
 PTA -31M -2F -9P 91R
 PTA% -0.04
 PTAT +1.00T 82R 8/16
 D/AV 19790M 4.0 785F 3.1 616P 8.4T

PALMYRA POKER GIGI-ET

65459562 4-07 90
 GOLD % FAT % PRT
 2-03 2 305 19810 4.3 850 3.1 605
 358 22110 4.3 951 3.1 682
 3-05 2 300 20780 3.4 708 3.0 631
 4-05 2 305 23690 3.6 857 3.1 737
 337 24780 3.7 911 3.1 780

 2ND WINTER CALF - 2008 MID-ATLANTIC NATL
 1ST SR 2-YEAR-OLD - 2010 MID-ATLANTIC NATL
 NOM ALL-AMERICAN SR 2-YEAR-OLD - 2010
 3RD SR 3-YEAR-OLD - 2011 SOUTHERN NATL

GRANDDAM: PALMYRA RAVEN S. GINGER

100330199 6-03 89
 GOLD % FAT % PRT
 1-11 2 365 27710 3.0 841 3.0 842
 3-04 2 334 23170 3.2 749 3.0 701
 4-06 2 365 35760 4.5 1626 2.9 1052
 5-11 2 365 22720 4.0 899 2.9 670
 7-03 2 365 33490 4.3 1453 2.9 976
 LIFE 2484 166320 3.8 6358 3.0 4994

Good-Use Ayr Farms

MICHAEL & LINDA HANSON, DAVID, MATTHEW & STEVEN

35400 ST HWY 1 NE

GOODRIDGE, MN 56725

(218) 378-4588

Email: miliha@gvtel.com

SCO-LO DREAM MISTRESS-ET



SCO-LO DREAM MISTRESS-ET

94.9% AYRSHIRE 12/07/14 FEMALE
 73762422 94.9%
 P- +413
 NM\$ -85
 PTA +0F +0P 0R
 PTA\$ -85CY 8/16

 1ST WINTER CALF - 2015 MID-ATLANTIC NAT'L JR
 JR CHAMPION - 2015 MID-ATLANTIC NATIONAL JR
 1ST WINTER CALF - 2015 MID-ATLANTIC NATIONAL
 JUNIOR CHAMPION - 2015 MID-ATLANTIC NATIONAL
 1ST WINTER CALF - 2015 INTERNATIONAL
 JUNIOR CHAMPION - 2015 INTERNATIONAL
 1ST WINTER CALF - 2015 CENTRAL NATIONAL JR
 JUNIOR CHAMPION - 2015 CENTRAL NATIONAL JR
 UNAN ALL-AMERICAN WINTER CALF - 2015
 UNAN JR ALL-AMERICAN WINTER CALF - 2015
 ALL WORLD 6-12 MONTH HEIFER - 2015
 1ST-WINTER YEARLING & JR CHAMP- 2016 NY
 SPRING SHOW
 WINTER YEARLING - 2016 MID-ATLANTIC NATIONAL
 JUNIOR CHAMPION - 2016 MID-ATLANTIC NATIONAL
 1ST WINTER YEARLING - 2016 INTERNATIONAL

EMBRYOS AVAILABLE- INQUIRIES WELCOME.

NEXUS DREAMER

103734662C 89.81%
 PTA +3.12SCC -3.5PL -3.0DPR
 PTA +29M +14F +3P 92R
 8/16
 PTA% +.08 +.01
 PTAV +.90T 89R 8/16
 D/AV 21088M 4.0 853F 3.2 670P 8.5T

RONN-AYR JC LOTO MATTIE-ET

65391579 3-00 88

DHI	%	FAT	%	PRT
2-06 2 305	22860	3.6	814	3.0 697
	338	25140	3.5	892 3.1 774
4-02 2 203	11450	3.5	405	3.4 387

NOM ALL-AMERICAN FALL YEARLING - 2010

GRANDDAM: VIEUX VILLAGE RENO MARILYN

100223150 5-09 93

DHI	%	FAT	%	PRT
3-06 2 305	23030	3.3	767	3.1 721
5-04 3 305	24090	4.5	1079	2.9 695
	306	24200	4.5	1083 2.9 698

2ND SR 2-YEAR-OLD - 2004 CENTRAL NATIONAL
 HM ALL-AMERICAN SR 2-YEAR-OLD - 2004
 2ND SR 3-YEAR-OLD - 2005 CENTRAL NATIONAL
 RES ALL-AMERICAN SR 3-YEAR-OLD - 2005
 1ST 5-YEAR-OLD - 2007 CENTRAL NATIONAL
 ALL-AMERICAN 5-YEAR-OLD - 2007

Stylin' Genetics

LESLIE & LINDA BRUCHEY
 400 STACY LEE CT
 WESTMINISTER, MD 21158
 443-244-1284



A member of the U.S. Livestock Genetics Export
1224 Alton Darby Creek Road, Suite B
Columbus, Ohio 43228

(614) 335-0020 | (614) 335-0023 Fax | info@usayrshire.com

www.USAYrshire.com

